

**FORTIS  
BANK**

Solid partners, flexible solutions

# **Diogene**

## **Computer Operations Manual**

Version 1.13

2007-02-12

DL-090 L2 Diogene\_Computer\_Operations Manual\_Ver 1.13

## Revision History

Version	Date	Author	Description
1.11	2007-01-31	Lisa Probst	
1.12	2007-02-09	Bruce McKenzie, Stephen Palko	Updated lay-out and structure.
1.13	2007-02-12	Stephen Palko, Lisa Probst	Formatting, adding LOF and descriptions

## Information Integration History

Missing Information	Date Received	Received From	Added To Document
<b>Missing information as of 2007-01-31: Version 0.11</b>			
Section 2.2 Table removed for now; does not apply Contacted Christophe Gurickx by e-mail and phone between Jan. 23 and 29; information pending.			
Section 3.1 – 3.3 <ul style="list-style-type: none"> <li>• Tivoli Storage Manage</li> <li>• Enterprise Storage System</li> <li>• Others/Software settings</li> </ul> Contacted Christophe Gurickx by e-mail and phone between Jan. 23 and 29; information pending.			
Section 5.1 & 5.2 Change procedures, whole section – N/A for Diogene - to be verified – waiting for information Contacted Christophe Gurickx by e-mail and phone between Jan. 23 and 29; information pending.			
Section 6.5 Interfacing, specifics for Digitech, Bloomberg and Sonaris need to be added - Contacted Christophe Gurickx by e-mail and phone between Jan. 23 and 29; information pending.			
Section 7.1 to 7.5 Need additional information such as work instructions Contacted Christophe Gurickx by e-mail and phone between Jan. 23 and 29; information pending.			
8 Appendix Unable to validate information - No access to test the information			
9 Appendix Unable to validate information - No access to test the information			
10 Appendix Unable to validate information - No access to test the information			

## Table of Contents

1. Introduction .....	6
1.1 High Level Architecture .....	6
1.1.1 Environment Architecture.....	8
1.1.1.1 System and Network Architecture .....	8
1.1.1.2 Server Infrastructure Architecture .....	10
1.1.1.3 WebSphere Application Servers and Database Architecture.....	11
1.1.1.4 Diogene Interface Architecture.....	12
1.2 Functional Information .....	12
2. Configuration Details .....	13
2.1 Tivoli Storage Manager .....	13
2.2 Enterprise Storage System.....	13
2.3 Software Settings.....	13
2.4 Other Configuration Details .....	13
3. Incident Handling .....	14
3.1 Incident Scenarios.....	14
3.1.1 Positions Frozen in Deal Entry .....	14
3.1.1.1 Checking Blocked DB Transaction SD -0031 .....	15
3.1.1.2 Finding Blocking Host Processes (SD-0032).....	15
3.1.1.3 Killing DB Process (SD-0033) .....	16
3.1.1.4 Restarting Control Partitions (SD-0022) .....	17
3.1.1.5 Restarting Control Panel Application (SD-0019) .....	18
3.1.1.6 Starting Control Panel Client (SD-0024).....	18
3.1.1.7 Starting AS400 Interface (SD-0025) .....	19
3.1.2 DB SESSION NOT CONNECTED IN DEAL ENTRY APPLICATION .....	20
3.1.2.1 Starting Econsole (SD-0018).....	21
3.1.3 DB SESSION NOT CONNECTED INT PRICER APPLICATION.....	21
3.1.3.1 Restarting frapri partitions (SD-0023).....	22
3.1.4 AS400 LINK NOT AVAILABLE (SD-0015).....	23
3.1.5 RATES NOT AVAILABLE (FIPS PROVIDER NOT RUNNING)(SD-0016).....	24
3.1.6 brf Process Check Procedure (SD-0038) .....	25
3.1.7 CITRIX SESSION SUDDENLY CLOSED OR DIOGENE SCREEN NOT DISPLAYING (SD-0014) .....	25
3.2 Finding the Citrix Server (SD-0034) .....	26
3.3 Locating the forterun Log (SD-0028).....	26
3.4 Locating Client Log (SD-0029).....	26

3.5	Operating Procedures.....	27
3.5.1.	Restarting Forte environment (SD-0017).....	27
3.5.2	Restarting Control Panel Application (SD-0019) .....	27
3.5.3	Disabling Client Partitions (SD-0057) .....	29
3.5.4	Killing all Clients Partitions (SD-0058).....	29
3.5.5	Disabling client partitions (SD-0057) .....	30
3.5.6	Stopping node managers (SD-0059).....	31
3.5.7	Starting node managers (SD-0060).....	32
4.	Change Procedures.....	33
4.1	Standard Change xxx.....	33
4.2	Standard Change xxx.....	34
5.	Processing.....	35
5.1	Start of Day (see Procedures Manual) .....	35
5.2	End of Day (see Process Manual).....	35
5.3	Backup.....	35
5.4	Interfaces .....	36
5.4.1	Reuters Example .....	36
5.5	Processes Outline.....	37
5.5.1	Example .....	37
5.5.2	Restoring the Libraries.....	38
5.5.3	Restoring Objects.....	46
5.5.4	Different LTO Bus.....	52
6.	Disaster Recovery.....	55
6.1	Introduction .....	55
6.2	Procedural Failover / DR steps .....	55
6.3	Alternate Location Characteristics.....	55
6.4	Work Instructions for Construction of the Alternate Location .....	55
6.5	Re-construct the Production environment .....	55
7.	Appendix: Commands.....	57
8.	Appendix: Directories .....	58
9.	Appendix: Keyboard Mappings – Reflection .....	59

10. Appendix: Diagnostic Monitoring.....	60
10.1 Daily Monitoring Process – Morning Check Procedures .....	60
10.1.1 SD-0036-Monitoring AS400 .....	62
10.1.2 How to Monitor AS/400 During the Day: .....	62
10.1.2.1 Command wrkactjob.....	62
10.1.2.2 DSPMSG QSYSOPR .....	63
10.1.2.3 ULYSSE Control Panel .....	66
10.2 Tivoli Enterprise Console (TEC).....	74

## List of Figures

Figure 1 Forte Environment.....	6
Figure 2 Diogene High Level Architecture.....	7
Figure 3 <Insert Description> .....	8
Figure 4 Pre-Production EU US.....	8
Figure 5 Production Europe / US .....	9
Figure 6 QA Europe / US.....	9
Figure 7 Server Infrastructure Architecture .....	10
Figure 8 WebSphere Application Servers and Database Architecture .....	11
Figure 9 Diogene Interfaces .....	12
Figure 10 Positions Frozen in Deal Entry .....	14
Figure 11 Restarting Control Partitions .....	17
Figure 12 Restarting Control Panels .....	18
Figure 13 AS 400 Interface .....	19
Figure 14 Database Not Connected Decision Tree .....	20
Figure 15 Restarting frapri Partitions.....	22
Figure 16 AS Link Unavailable Decision Tree.....	23
Figure 17 Rate Not Available Decision Tree .....	24
Figure 18 Citrix Session Closed or Diogene not Available Decision Tree .....	25
Figure 19 Restarting Control Panel Application .....	28

# 1. Introduction

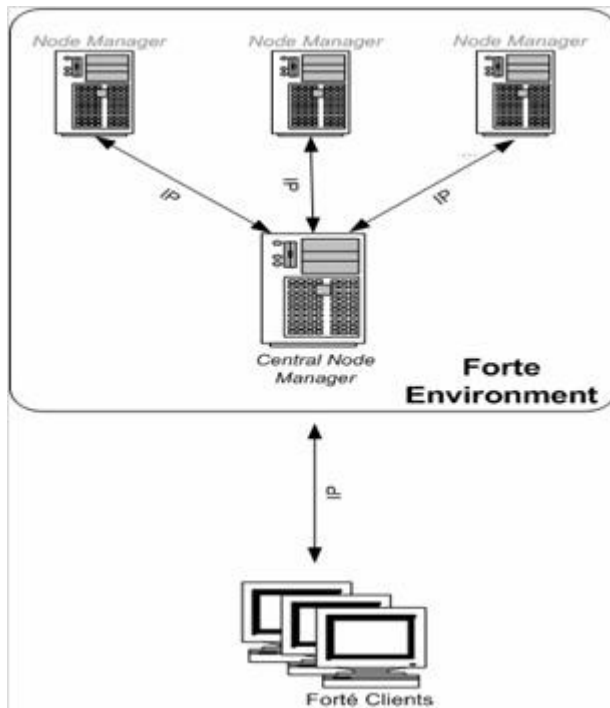
This manual will provide the second-level support personnel with information on the production environment. This manual is a reference document and will assist support professionals in performing their tasks, such as inputting the required parameters and verifying the control reports.

Service Code: DNFO

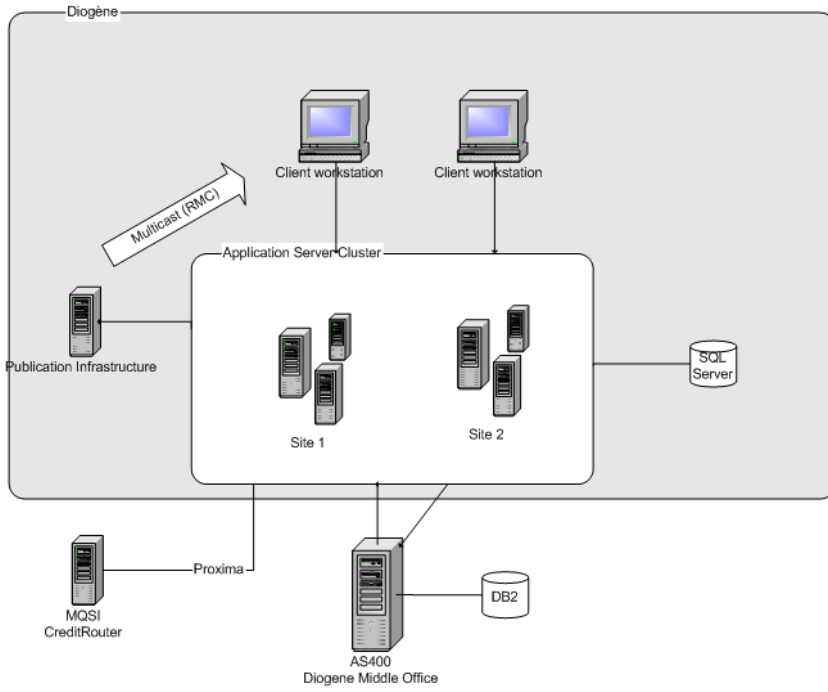
Business Line: MB GMK

## 1.1 High Level Architecture

The following two high level diagrams show the Diogene High Level Architecture.



**Figure 1** Forte Environment



**Figure 2** Diogene High Level Architecture

### 1.1.1 Environment Architecture

The production environment is used for MB (acronym for?) and non-production for CB (acronym for?) (Cash: Deposits MEC, Straight Loans MEC, Forex MEC). Further description required.

#### 1.1.1.1 System and Network Architecture

The Production and QA Diogene System and Network architecture for Europe and the US are equivalent in structure and are detailed in the following four diagrams.

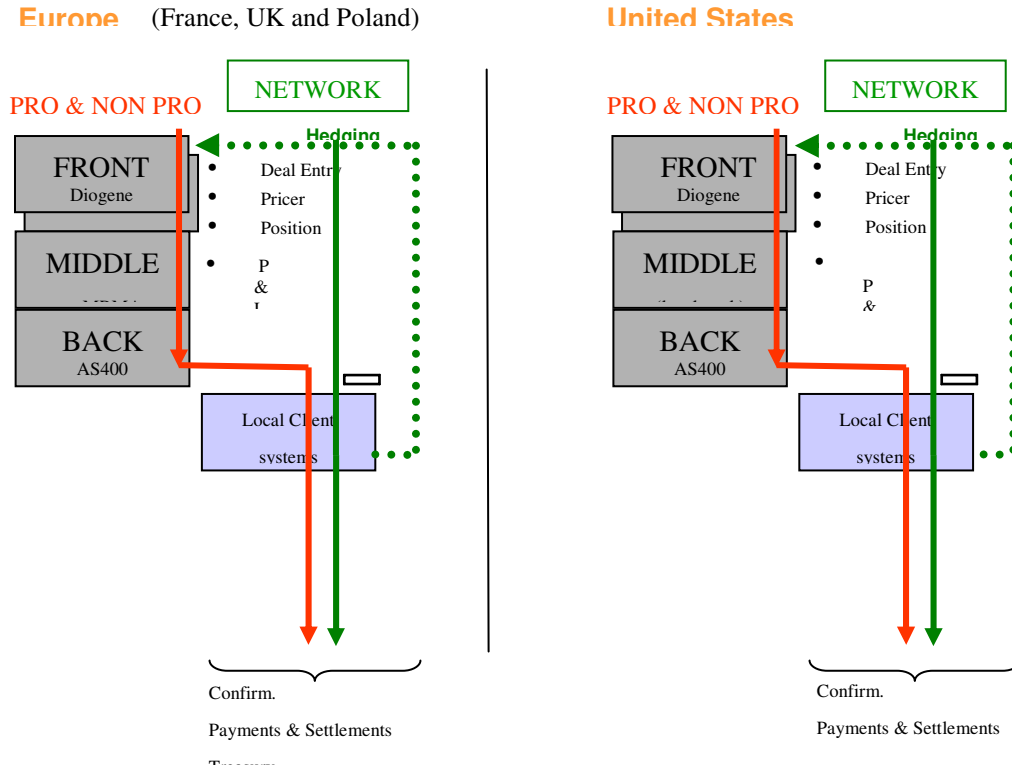


Figure 3 Front, Middle and Back Office diagram

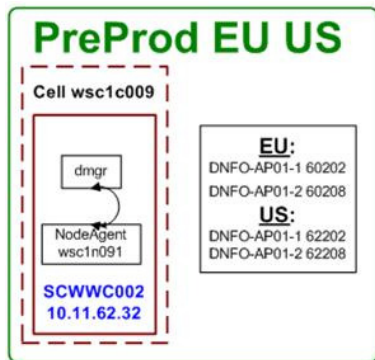


Figure 4 Pre-Production EU US

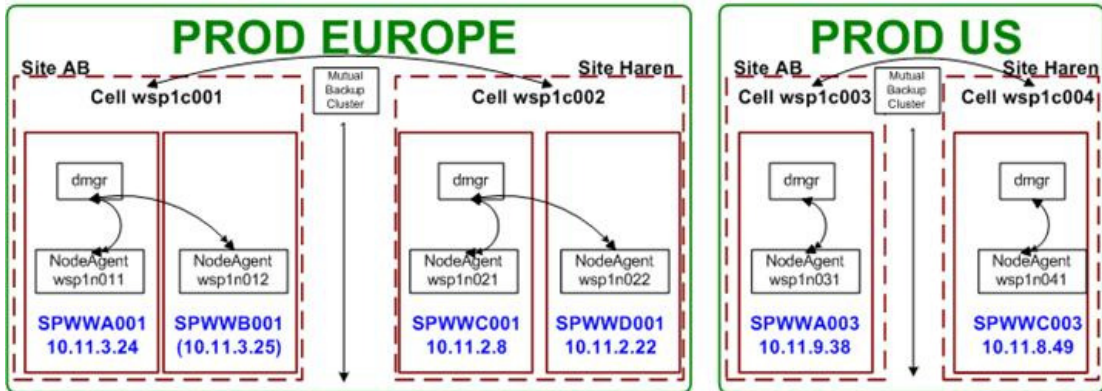


Figure 5 Production Europe / US

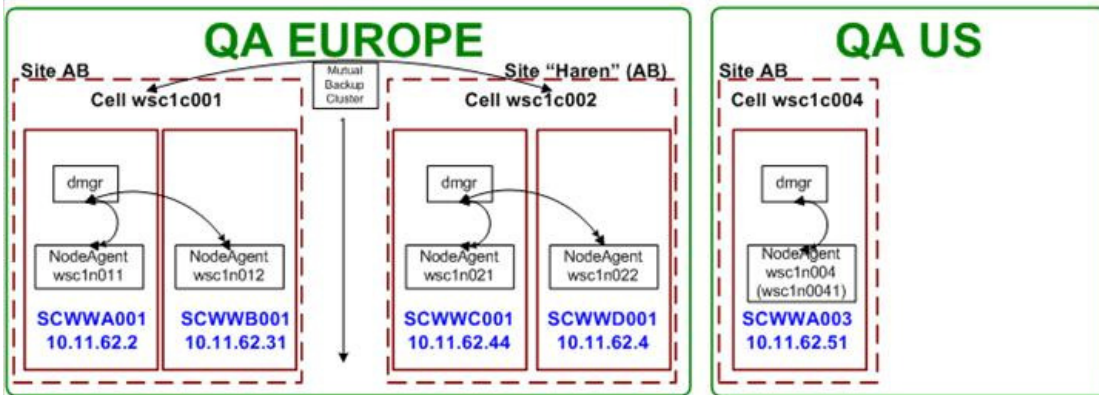


Figure 6 QA Europe / US

### 1.1.1.2 Server Infrastructure Architecture

Further description required.

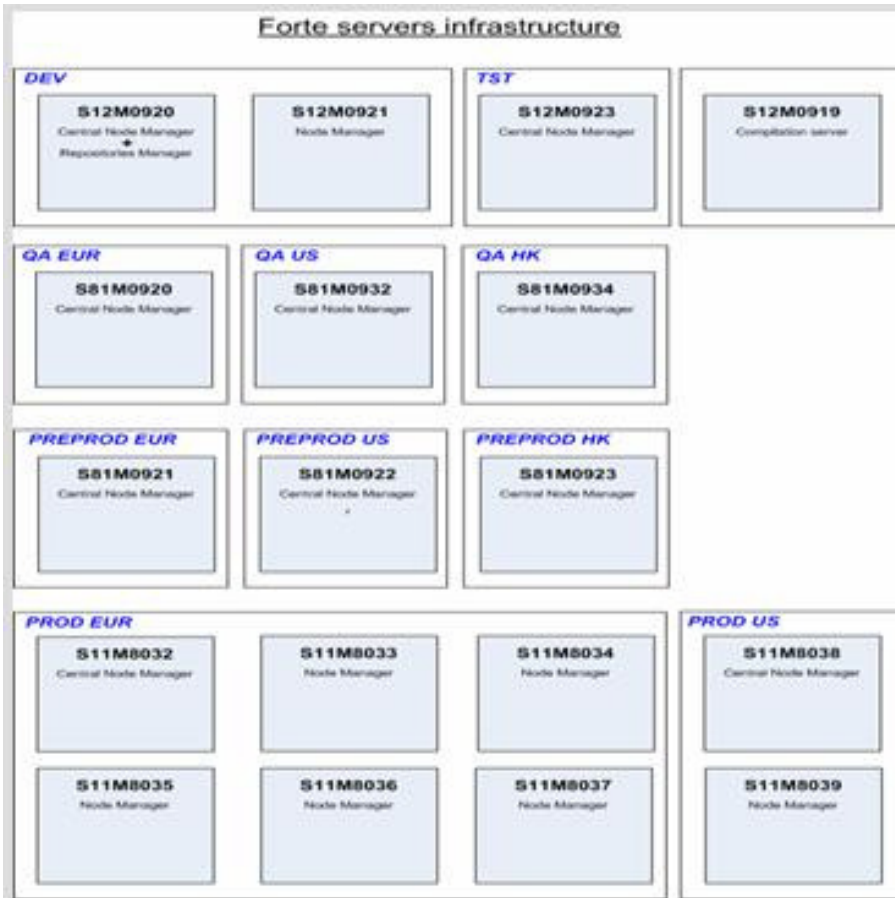
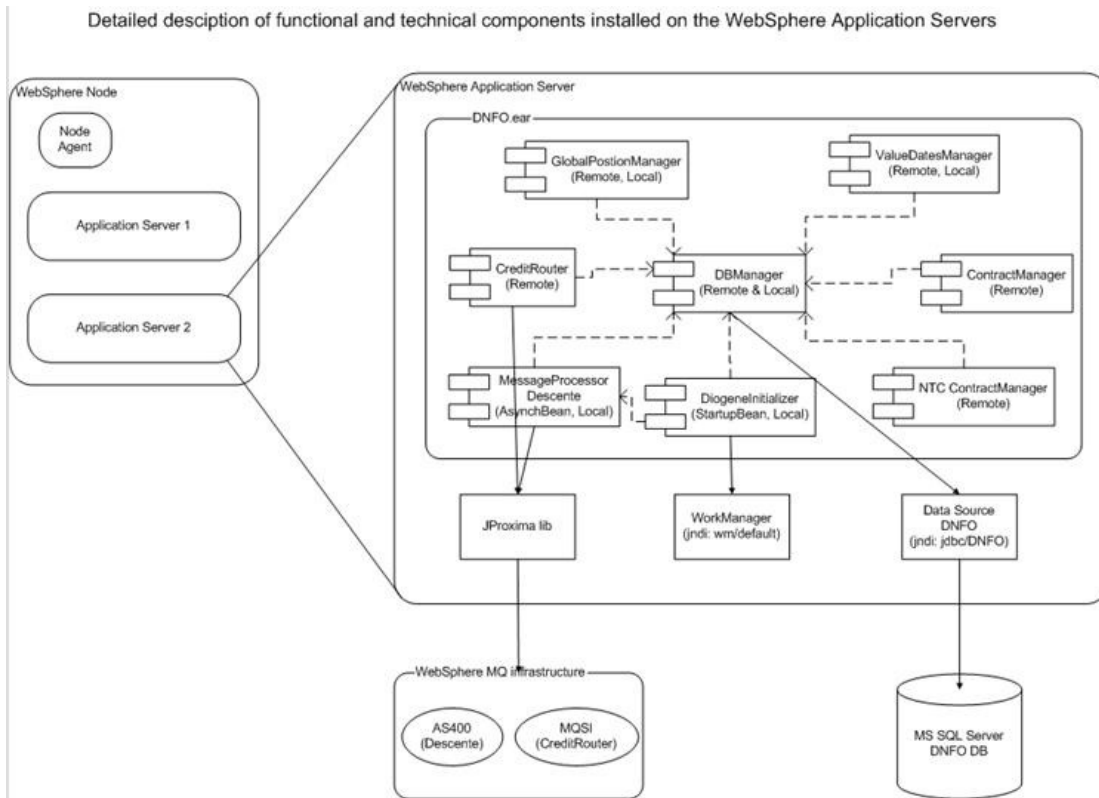


Figure 7 Server Infrastructure Architecture

### 1.1.1.3 WebSphere Application Servers and Database Architecture

Further description required.



**Figure 8** WebSphere Application Servers and Database Architecture

### 1.1.1.4 Diogene Interface Architecture

Further description required.

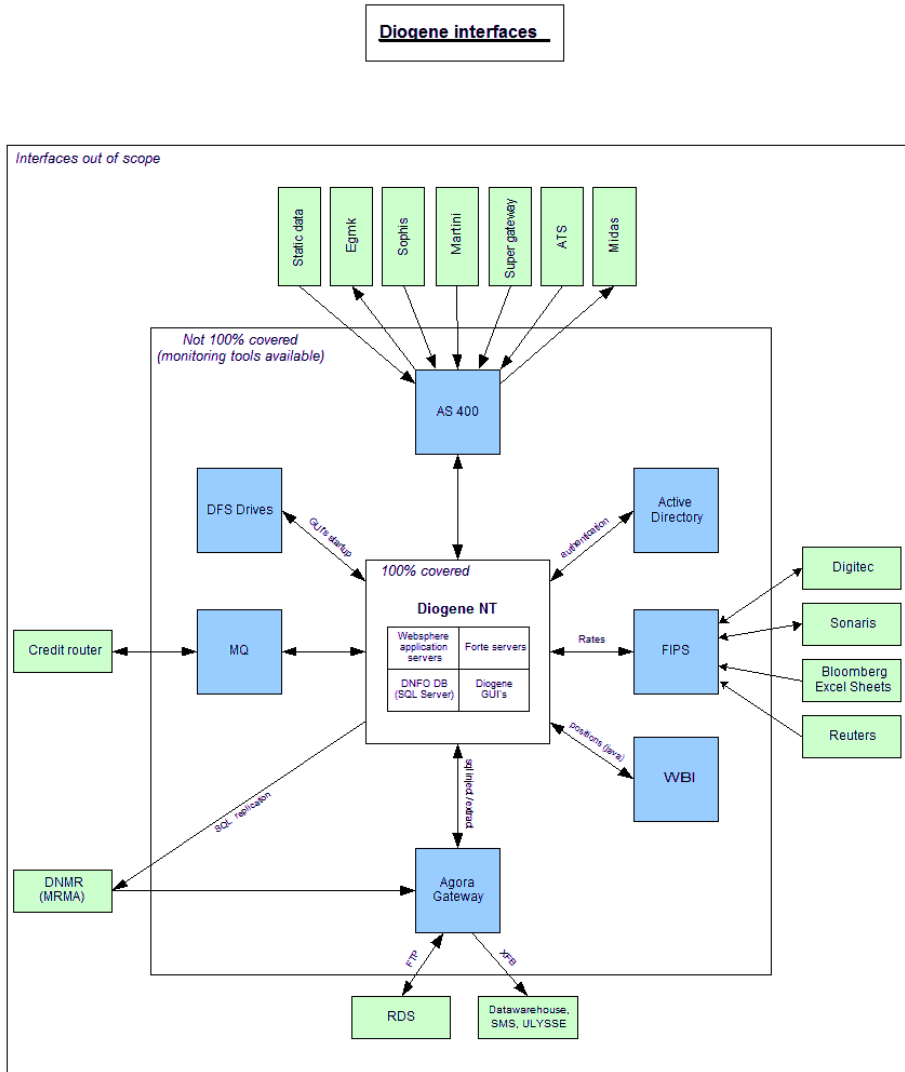


Figure 9 Diogene Interfaces

### 1.2 Functional Information

For functional and procedural information regarding the Technical Architecture of Diogene, see the Process Manual.

## **2 Configuration Details**

### **2.1 Tivoli Storage Manager**

The information for this section is not yet available. The following details are required:

- TSM Process Flow
- Used Components
- Procedures and Settings

### **2.2 Enterprise Storage System**

The information for this section is not yet available. The following details are required:

- ESS Process Flow
- Used Components
- Used Procedures

### **2.3 Software Settings**

The information for this section is not yet available.

### **2.4 Other Configuration Details**

The information for this section is not yet available.

### 3 Incident Handling

This section describes the actions necessary to correct the most frequently reported problems.

#### 3.1 Incident Scenarios

##### 3.1.1 Positions Frozen in Deal Entry

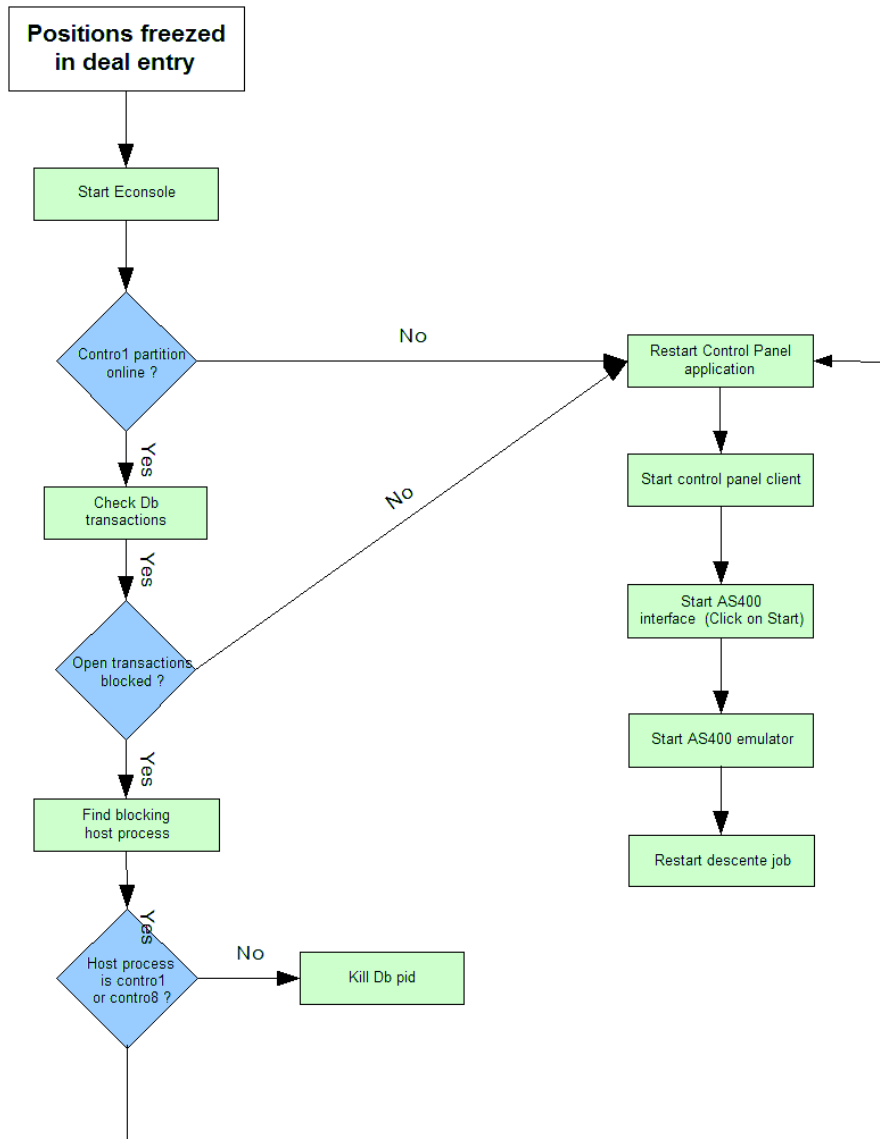


Figure 10 Positions Frozen in Deal Entry

### 3.1.1.1 Checking Blocked DB Transaction SD -0031

1. Open the Desktop for SQL client tools
  - a. Open the citrix client neighborhood program
  - b. Open the Fortis bank ASP center farm (INT account)
  - c. Open the Support folder
  - d. Double click on Desktop for SQL client tools
2. Click on Start → Programs → MSSQL 2000 clients tools → SQL Query Analyser
3. Connect to the appropriate SQL Server with windows authentication enabled
  - dbsdevdinfo for EURDEV
  - dbsdevdnfous for USDEV
  - dbsqadinfo for EURQA
  - dbsqadnfous for USQA
  - dbsqadnfopreprod for EURPREPROD
  - dbsqadnfouspreprod for USPREPROD
  - dbsproddinfo for EURPROD
  - dbsproddnfous for USPROD
4. Select the appropriate DB
  - DNFO for EUR (any environment except EURPREPROD)
  - DNFOUS for US (any environment except USPREPROD)
  - DNFOUSPROD for EURPREPROD
  - DNFOUSPREPROD for USPREPROD
5. Type:  
sp\_who2

(This command shows all the Db processes running on the database server. Look at the BlkBy column, this indicate if there is a blocking process. If there is more than one entry in this column, locate the parent blocking process. Remember this number, this is the spid (db process) that is currently blocking other db transactions, you may have to kill it (see Section: see procedure: Killin DB Process SD-0033)).

### 3.1.1.2 Finding Blocking Host Processes (SD-0032)

1. Execute procedure SD-0032
2. You should now have the blocking spid (db process).
3. type this

```
select spid,last_batch,nt_username,hostname,hostprocess from master..sysprocesses
where open_tran > 0 and spid = [BLOCKINGSPID]
```
4. Read the hostname and the hostprocess of the spid.
5. Make a plist on the hostname displayed to find the remote process name

pslist \\[remotehost] [hostprocess]

6. Remember the process name

### 3.1.1.3 Killing DB Process (SD-0033)

Before killing a DB process on the DNFO database, make sure you understand what you do. Do not kill a process if you do not know what it does.

1. First check, which remote process is attached to your spid. If you don't know how to do this, read this procedure
2. If the remote process is contro8 or contro1, don't kill this spid !! Make a full restart of the Control Panel application and this should solve your problem.
3. If the remote process is not contro8 or contro1, check what the db process is currently doing. You can see this by requesting the last executed command. Following commands are done in the SQL Query Analyzer.

dbcc inputbuffer [spid]

4. If the last command executed is a select statement, kill the spid by using this command  
kill [spid]
5. If the last command executed is an insert, please try first to know if this a critical transaction or not.

### 3.1.1.4 Restarting Control Partitions (SD-0022)

1. Open the EConsole program (see procedure)
2. Click on the view menu and select application outline
3. Expand CONTROLPANEL\_PW\_c10 application
4. Select the partition you want to restart (for example ControlPanel\_Cl0\_Part2 partition)
5. Click on red arrow (Shutdown)
6. Click on green arrow (Start up)

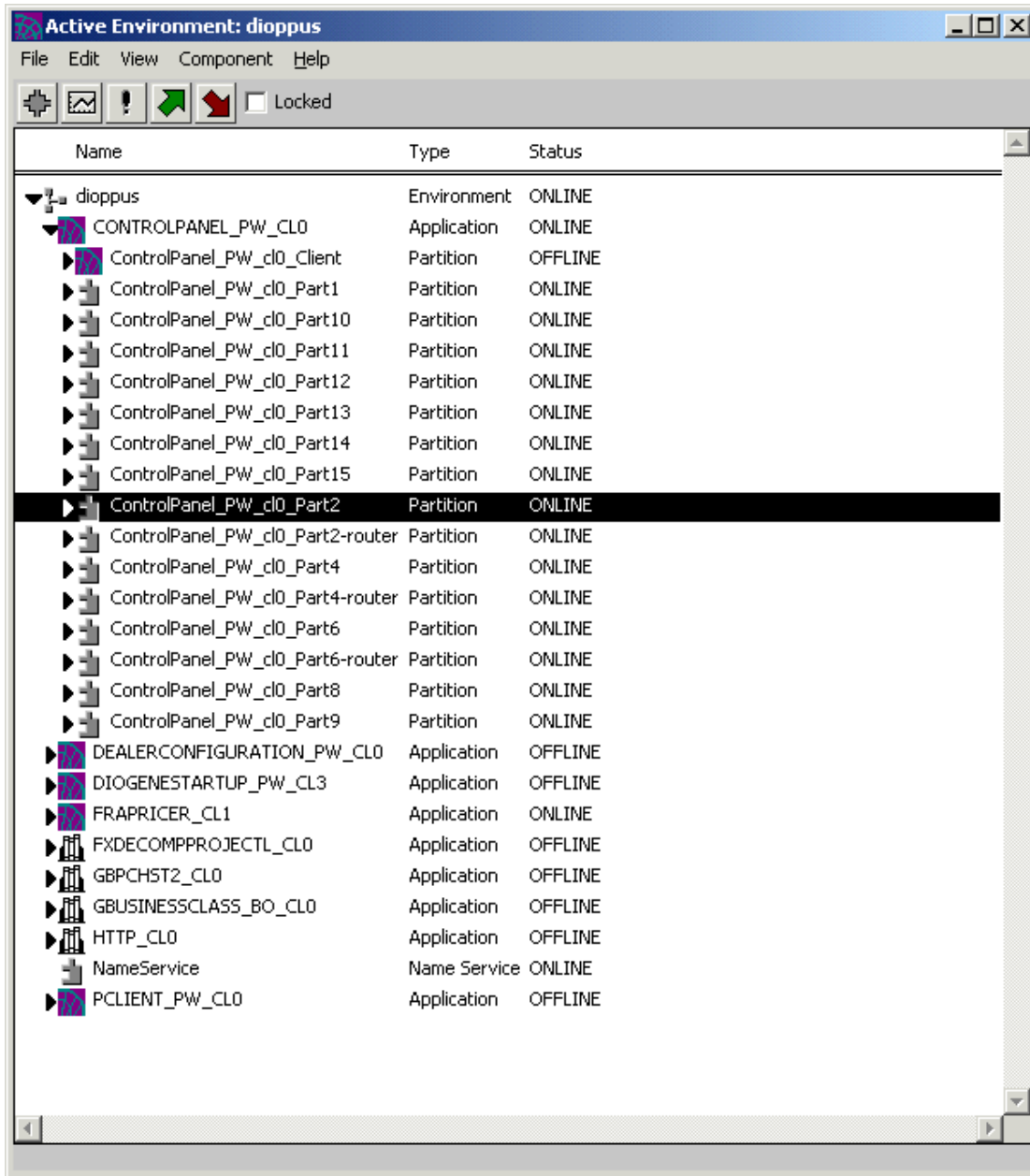


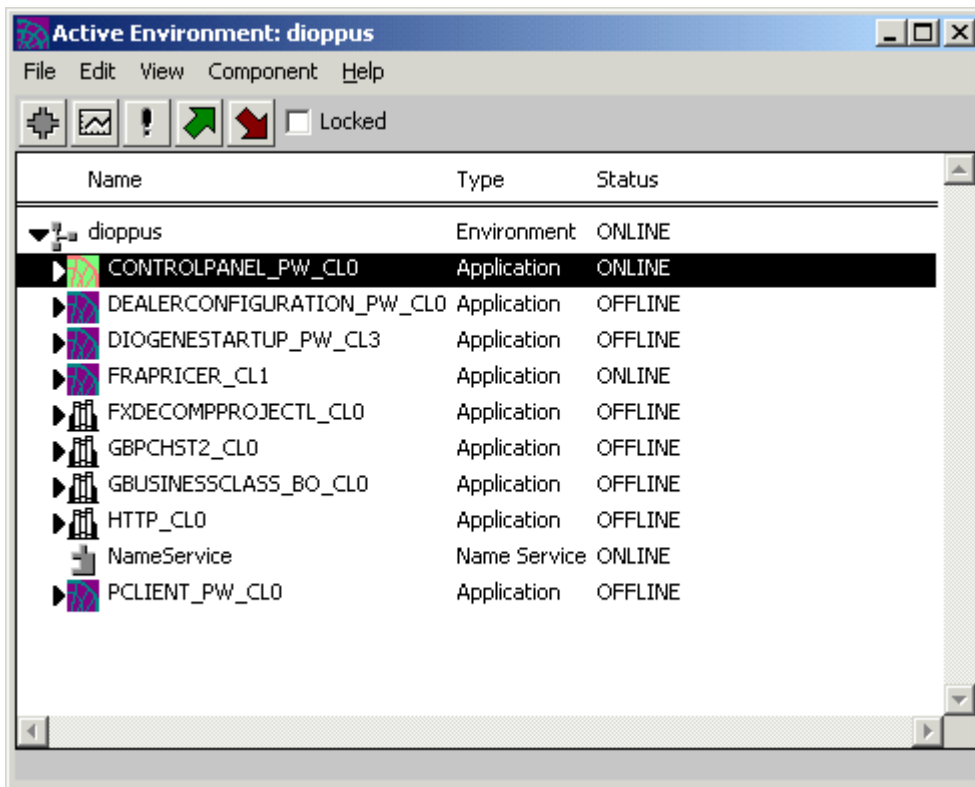
Figure 11 Restarting Control Partitions

### 3.1.1.5 Restarting Control Panel Application (SD-0019)

1. Open the EConsole Program (see procedure)

**Note:** The following procedures are also required after restarting the control panel with the Econsole.

- a. Start the control panel client
  - b. Start the AS400 interface
  - c. Start the AS400 emulator
  - d. Start the descent job
2. Click on the view menu and select application outline
  3. Click on CONTROLPANEL\_PW\_c10 application
  4. Click on red arrow (Shutdown)
  5. Click on green arrow (Start up)



**Figure 12** Restarting Control Panels

### 3.1.1.6 Starting Control Panel Client (SD-0024)

1. Start Citrix neighbourhood program
2. Connect to the appropriate farm
  - XBow non Production for DEV,TST,QA,PREPROD (connect with your INTNP account)
  - XBow Production for PROD (connect with your int account)

3. Go to Merchant Bank folder
4. Go to the appropriate Diogene environment folder
5. Double click on the Control Panel icon

### 3.1.1.7 Starting AS400 Interface (SD-0025)

1. Start the Control panel client (see procedure)
2. Click on Start and wait the light to be green

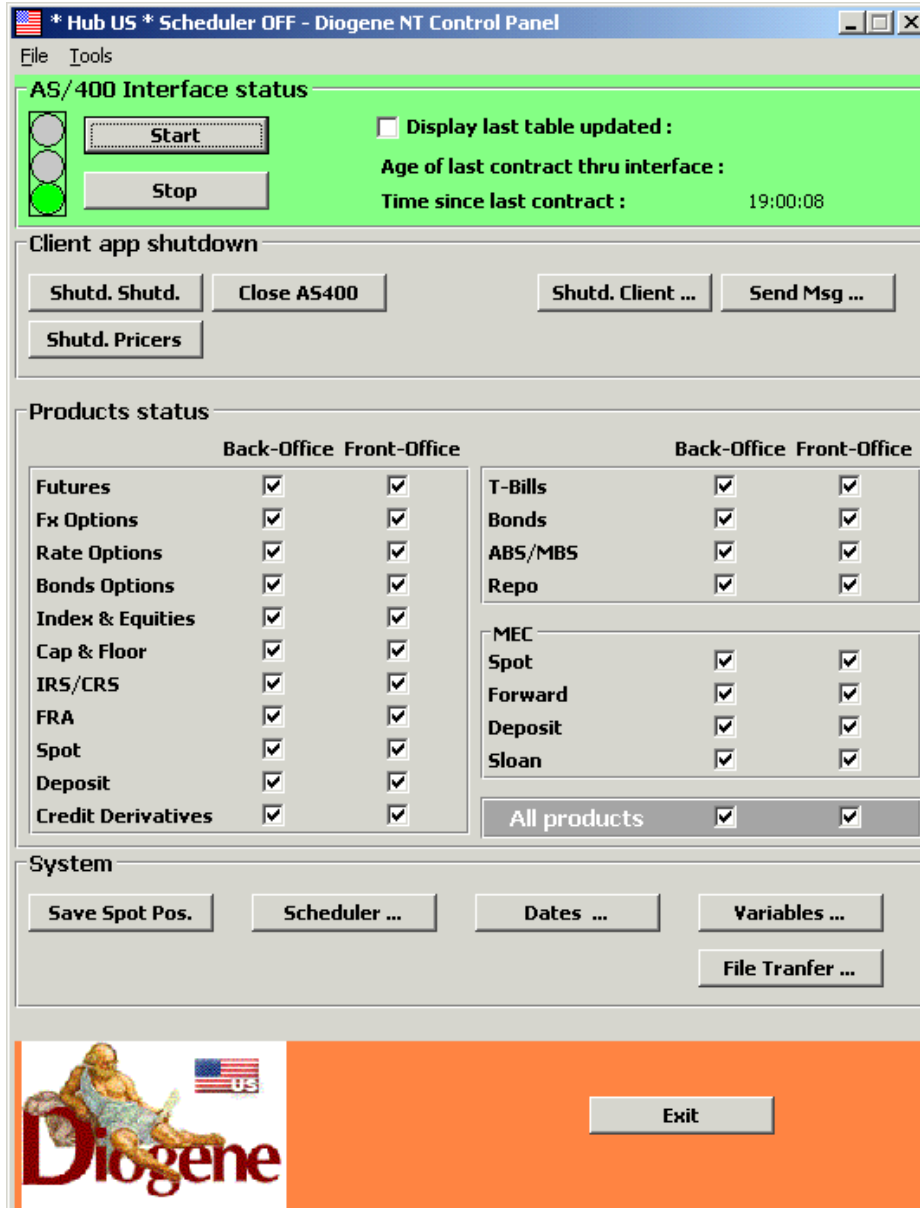
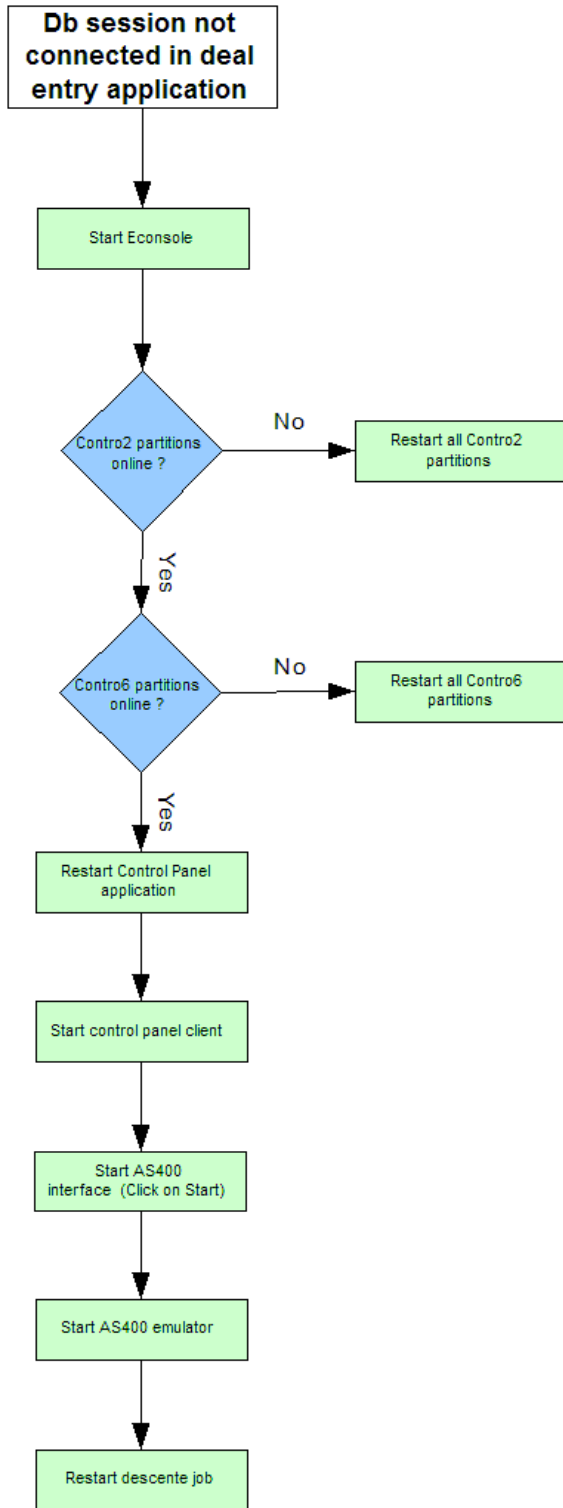


Figure 13 AS 400 Interface

### 3.1.2 DB SESSION NOT CONNECTED IN DEAL ENTRY APPLICATION

Decision Tree:



**Figure 14 Database Not Connected Decision Tree**

### 3.1.2.2 Starting Econsole (SD-0018)

1. Start Citrix neighborhood program
2. Connect to the appropriate farm
  - XBow non Production for DEV,TST,QA,PREPROD (connect with your INTNP account)
  - XBow Production for PROD (connect with your int account)
3. Go to Merchant Bank folder
4. Go to the appropriate Diogene environment folder
5. Double click on the Econsole icon

For procedures 2 – 7, see positions frozen above.? Further information required.

### 3.1.3 DB SESSION NOT CONNECTED INT PRICER APPLICATION

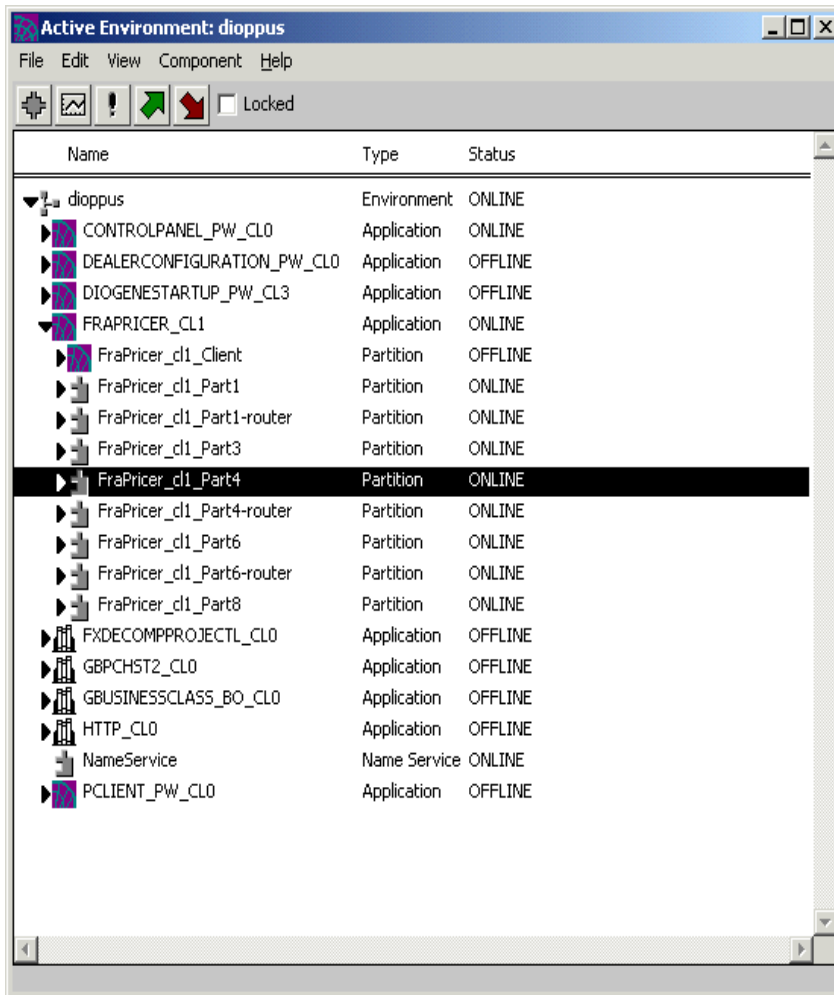
Related Procedures:

Starting Econsole, see Starting Econsole SD-0018

Restarting Frapri partitions

### 3.1.3.2 Restarting frapri Partitions (SD-0023)

1. Open the EConsole program (see procedure)
2. Click on the view menu and select application outline
3. Expand FRAPRICER\_cl1 application
4. Select the partition you want to restart (for example FraPricer\_C11\_Part4 partition)
5. Click on red arrow (Shutdown)
6. Click on green arrow (Start up)



**Figure 15** Restarting frapri Partitions

### 3.1.4 AS400 LINK NOT AVAILABLE (SD-0015)

Procedures are the same as in DB SESSION NOT CONNECTED IN DEAL ENTRY APPLICATION.

1. Starting Econsole
2. Restarting Control partitions
3. Restarting Control Panel application
4. Starting Control Panel client
5. Starting AS400 interface
6. Starting AS400 emulator (get info)
7. Restarting descente(download) job (get info)

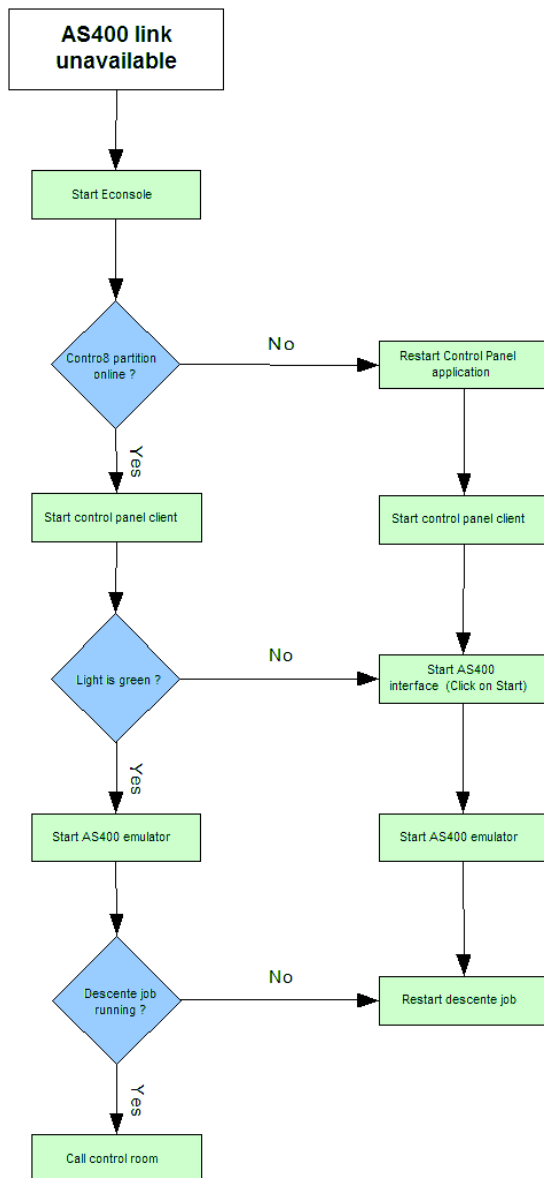


Figure 16 AS Link Unavailable Decision Tree

### 3.1.5 RATES NOT AVAILABLE (FIPS PROVIDER NOT RUNNING)(SD-0016)

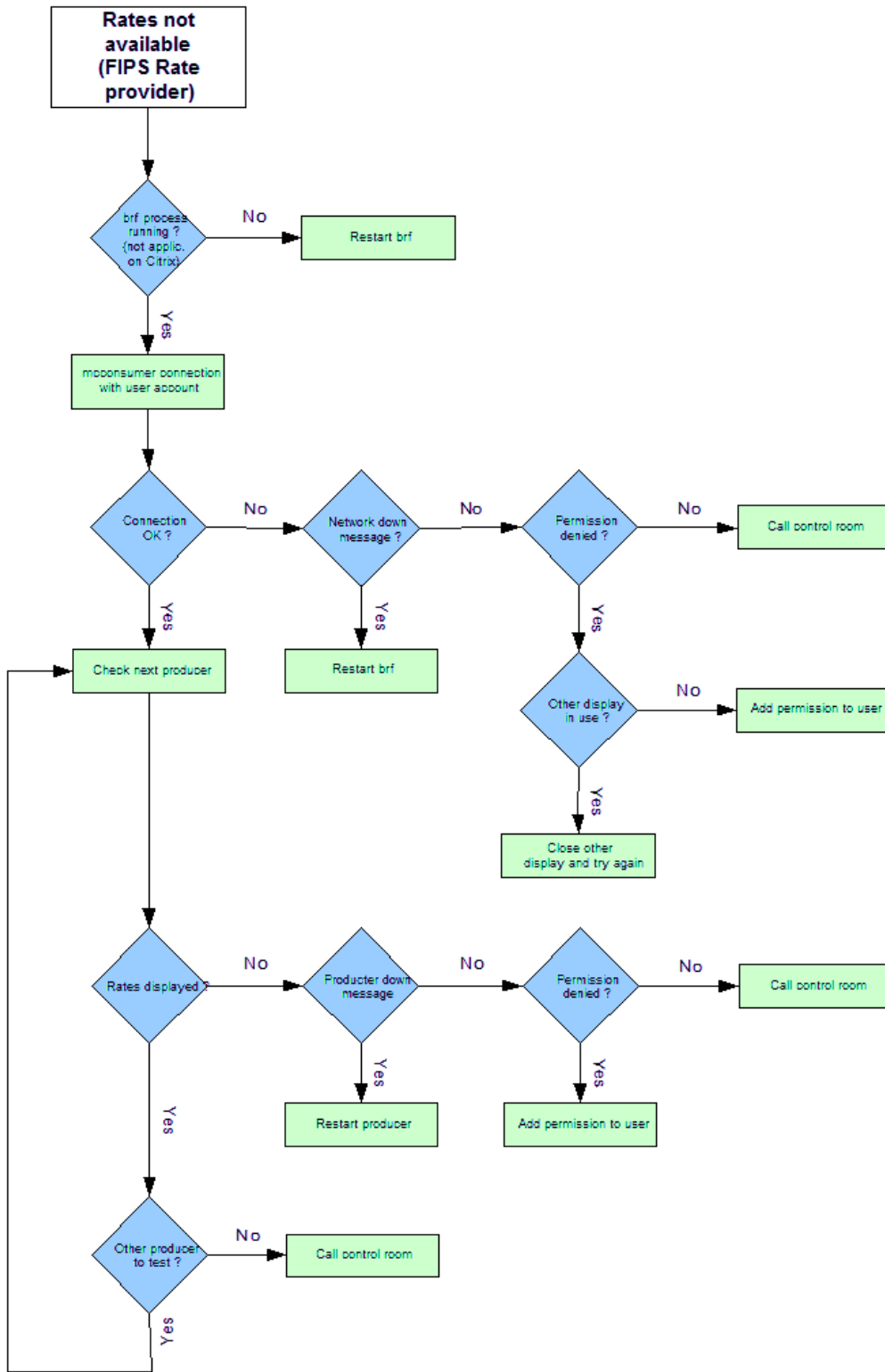


Figure 17 Rate Not Available Decision Tree

Procedures related to the Rates Not Available decision tree, Figure 17:

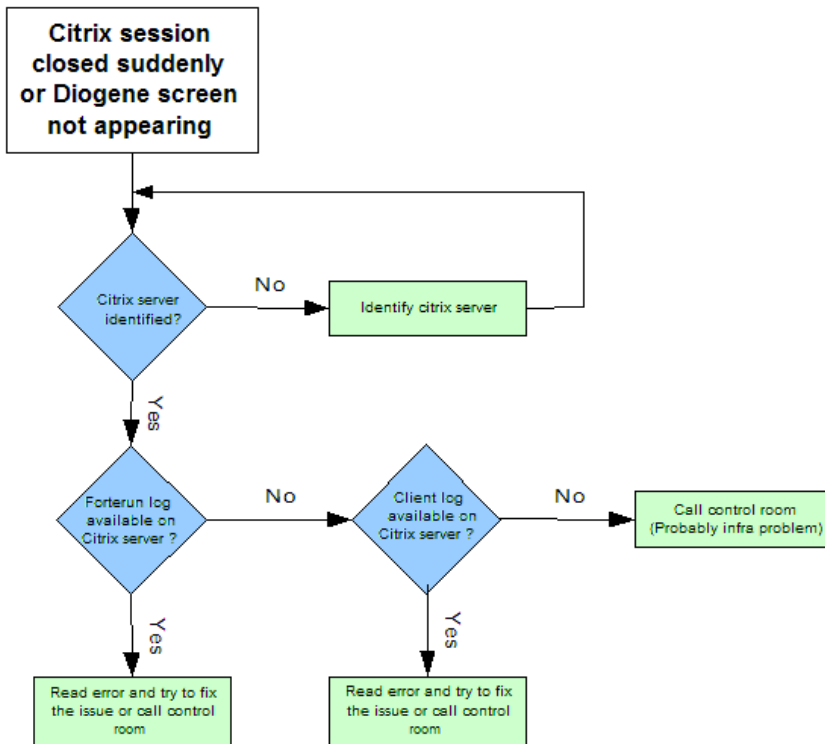
1. brf process check procedure
2. Connection and producers check procedure (information does not yet exist)

### 3.1.6 brf Process Check Procedure (SD-0038)

**Important NOTE:** If the FIPS is configured to use the point to point protocol, you don't have to do this test as there will be not brf running. This is the case on each Citrix server.

- If you have an interactive session
- Open the task manager and click on the process tab. The brf process should be there.
- If you don't have an interactive session
- Do a pslist on the host to check. This tool is available on the E drive (E:\Se-Entity\Se-r-23-MCCSUPAE\Agora\Software\SysInternals\Pstools). Do not forget to first authenticate yourself on the remote host (via the net use command).
- net use \\hosttocheck /u:[Admindomain]\%USERNAME%
- E:\Se-Entity\Se-r-23-MCCSUPAE\Agora\Software\SysInternals\Pstools\pslist \\hosttocheck
- The brf process should be on the list displayed.

### 3.1.7 CITRIX SESSION SUDDENLY CLOSED OR DIOGENE SCREEN NOT DISPLAYING (SD-0014)



**Figure 18 Citrix Session Closed or Diogene not Available Decision Tree**

Procedures related to this decision tree:

- Finding the Citrix server
- Locating forterun log
- Locating client log

### **3.2 Finding the Citrix Server (SD-0034)**

There are 2 different ways to get the citrix server name associated to a user

First method:

- Ask the user to click on the program neighborhood connection center located next to the taskbar and ask him to read the server name related to the Diogene session before the connection is closed.

Second method:

1. Open the Citrix Program Neighborhood
2. Open the appropriate farm
  - XBow non Production for DEV,TST,QA,PREPROD (connect with your RES account)
  - XBow Production for PROD (connect with your RES account)
3. Open the Citrix support tool folder
4. Double click on Management console for metaframe server 4
5. In the Citrix administration console, expand applications
6. Expand metaframe xp applications
7. Expand \_business lines
8. Try to find the right profile server (XTS82 for diogene)
9. Expand the appropriate diogene environment
10. Click on the user application and try to find the user's session on the right panel
11. If you locate it, the citrix server is displayed on the same line

### **3.3 Locating the forterun Log (SD-0028)**

1. Read the previous procedure to find the citrix server (if the user has a citrix session)
2. Locate the user's temp directory. Each user has his own temp directory under the D:\temp folder. The name of the folder is random (generally a letter or a number). In each directory, there is a file containing the user login. Open each folder and try to find the right user login. The timestamp on the folder can save you some time
3. Open the user's temp directory
4. The forterun log should be there.

### **3.4 Locating Client Log (SD-0029)**

1. Read the previous procedure to find the citrix server (if the user has a citrix session)

2. Locate the user's temp directory. Each user has his own temp directory under the D:\temp folder. The name of the folder is random (generally a letter or a number). In each directory, there is a file containing the user login. Open each folder and try to find the right user login. The timestamp on the folder can save you some time
3. Open the user's temp directory and open the log folder
4. Open the user application directory
5. The log should be there

## **3.5 Operating Procedures**

### **3.5.1.2 Restarting Forte environment (SD-0017)**

Restarting an environment requires to first restart the central node manager and the rest of the node managers afterwards (if any). Agora technical support has provided several scripts which will do this for you.

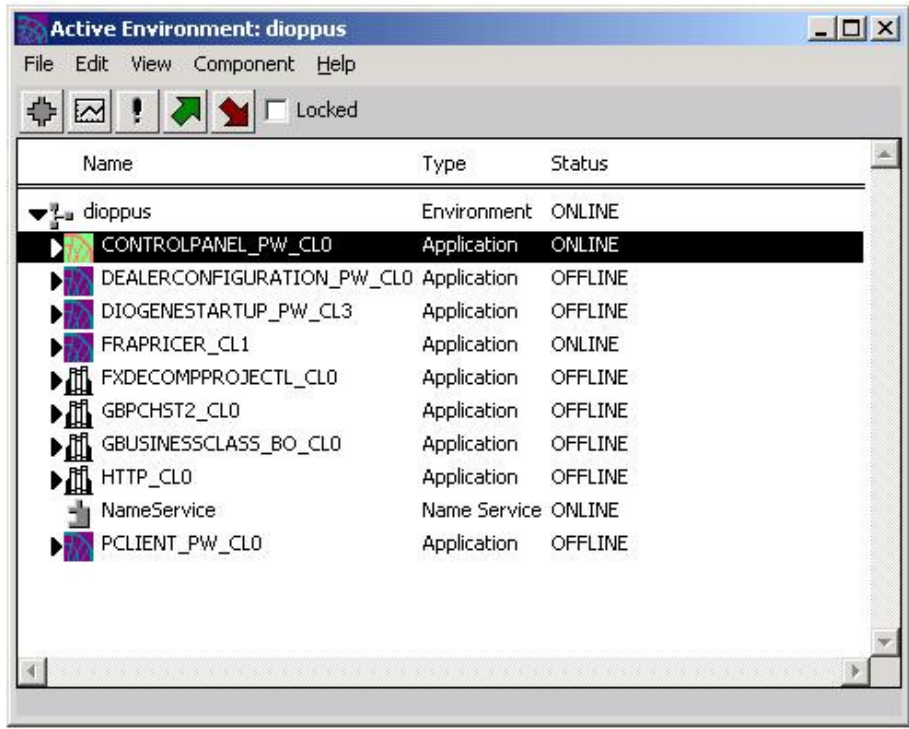
When you have to stop the Production environment, it is also required to stop all the clients before doing this. This will make sure that every client sessions will be properly restarted. This process is also included in the scripts provided by Agora technical support

Here are the steps to achieve this :

1. Disable client partitions
2. Kill clients partitions
3. Stop node managers
4. Start node managers
5. Start Control Panel
6. Start Pricer
7. Start FIR (if any)
8. Enabling client partitions

### **3.5.1.3 Restarting Control Panel Application (SD-0019)**

1. Open the EConsole program (see procedure)
2. Click on the view menu and select application outline
3. Click on CONTROLPANEL\_PW\_cl0 application
4. Click on red arrow (Shutdown)
5. Click on green arrow (Start up)



**Figure 19**      **Restarting Control Panel Application**

### 3.5.1.4 Disabling Client Partitions (SD-0057)

#### DEV

1. Connect to a XBOW virtual desktop on the XBOW Non Production farm (INTNP account) under the DEV folder and execute the following script :
  - F:\\_ApplicationData\DiogeneForte-DNFO\Utils\Interventions\Development\DisableClient\_EURDEV.bat
2. Connect to a FOCUS virtual desktop on the ASP Center DEV farm (INTNP account) under the Merchant Bank folder and execute the following script :
  - W:\Application\_Data\se-dnfo\Utils\Interventions\Development\DisableClient\_EURDEV.bat

#### QA

1. Connect to a XBOW virtual desktop on the XBOW Non Production farm (INTNP account) under the Office folder and execute the following script :
  - F:\\_ApplicationData\DiogeneForte-DNFO\Utils\Interventions\QA\DisableClient\_[HUB]QA.bat
2. Connect to a FOCUS virtual desktop on the ASP Center QA farm (INTNP account) under the Merchant Bank folder and execute the following script :
  - W:\Application\_Data\se-dnfo\Utils\Interventions\QA\DisableClient\_[HUB]QA.bat

#### PREPROD

1. Connect to a XBOW virtual desktop on the XBOW Non Production farm (INTNP account) under the Office folder and execute the following script :
  - F:\\_ApplicationData\DiogeneForte-DNFO\Utils\Interventions\QA\DisableClient\_[HUB]PREPROD.bat
2. Connect to a FOCUS virtual desktop on the ASP Center QA Center farm (INT account) under the Merchant Bank folder and execute the following script :
  - W:\Application\_Data\se-dnfo\Utils\Interventions\QA\DisableClient\_[HUB]PREPROD.bat

#### PROD

**Note: Make sure you have killed all the client sessions before doing this. If you don't know how to kill them, please read the Killing all clients partitions (SD-0058) procedure.**

1. Connect to a XBOW virtual desktop on the XBOW Production farm (INT account) under the Office folder and execute the following script :
  - F:\\_ApplicationData\DiogeneForte-DNFO\Utils\Interventions\Production\DisableClient\_[HUB]PROD.bat
2. Connect to a FOCUS virtual desktop on the Fortis Bank ASP Center (INTNP account) under the Merchant Bank folder and execute the following script :
  - W:\Application\_Data\se-dnfo\Utils\Interventions\PROD\DisableClient\_[HUB]PROD.bat

### 3.5.1.5 Killing all Clients Partitions (SD-0058)

**Note: Before doing this, make sure you have disabled the start of the clients, otherwise new ones will restart immediately. If you don't know how to do this, follow the Disabling client partitions (SD-0057) procedure.**

Killing the diogene clients is done by executing two scripts. The first one will send a multicast kill process message to all workstations (95%). The second one will kill the clients who did not receive the multicast message (5%).

#### DEV

Connect to a XBOW virtual desktop on the XBOW Non Production farm (INTNP account) under the DEV folder and execute the following scripts :

- F:\\_ApplicationData\DiogeneForte-DNFO\Utils\Interventions\Development\DiogeneKillP2P\_EURDEV.bat.bat

#### QA

Connect to a XBOW virtual desktop on the XBOW Non Production farm (INTNP account) under the Office folder and execute the following script :

- F:\\_ApplicationData\DiogeneForte-DNFO\Utils\Interventions\QA\DiogeneKillP2P\_[HUB]QA.bat.bat

#### PREPROD

Connect to a XBOW virtual desktop on the XBOW Non Production farm (INTNP account) under the Office folder and execute the following script :

- F:\\_ApplicationData\DiogeneForte-DNFO\Utils\Interventions\QA\DiogeneKillP2P\_[HUB]PREPROD.bat.bat

#### PROD

Connect to a XBOW virtual desktop on the XBOW Production farm (INT account) under the Office folder and execute the following script :

- F:\\_ApplicationData\DiogeneForte-DNFO\Utils\Interventions\Production\DiogeneKillP2P\_[HUB]PROD.bat.bat

### 3.5.1.6 Disabling client partitions (SD-0057)

#### DEV

1. Connect to a XBOW virtual desktop on the XBOW Non Production farm (INTNP account) under the DEV folder and execute the following script :
  - F:\\_ApplicationData\DiogeneForte-DNFO\Utils\Interventions\Development\DisableClient\_EURDEV.bat
2. Connect to a FOCUS virtual desktop on the ASP Center DEV farm (INTNP account) under the Merchant Bank folder and execute the following script :
  - W:\Application\_Data\se-dnfo\Utils\Interventions\Development\DisableClient\_EURDEV.bat

#### QA

1. Connect to a XBOW virtual desktop on the XBOW Non Production farm (INTNP account) under the Office folder and execute the following script :
  - F:\\_ApplicationData\DiogeneForte-DNFO\Utils\Interventions\QA\DisableClient\_[HUB]QA.bat
2. Connect to a FOCUS virtual desktop on the ASP Center QA farm (INTNP account) under the Merchant Bank folder and execute the following script :
  - W:\Application\_Data\se-dnfo\Utils\Interventions\QA\DisableClient\_[HUB]QA.bat

#### PREPROD

1. Connect to a XBOW virtual desktop on the XBOW Non Production farm (INTNP account) under the Office folder and execute the following script :
  - F:\\_ApplicationData\DiogeneForte-DNFO\Utils\Interventions\QA\DisableClient\_[HUB]PREPROD.bat
2. Connect to a FOCUS virtual desktop on the ASP Center QA Center farm (INT account) under the Merchant Bank folder and execute the following script :
  - W:\Application\_Data\se-dnfo\Utils\Interventions\QA\DisableClient\_[HUB]PREPROD.bat

PROD

**Note: Make sure you have killed all the client sessions before doing this. If you don't know how to kill them, please refer to the paragraph Killing all clients partitions (SD-0058).**

1. Connect to a XBOW virtual desktop on the XBOW Production farm (INT account) under the Office folder and execute the following script :
  - F:\\_ApplicationData\DiogeneForte-DNFO\Utils\Interventions\Production\DisableClient\_[HUB]PROD.bat
2. Connect to a FOCUS virtual desktop on the Fortis Bank ASP Center (INTNP account) under the Merchant Bank folder and execute the following script :
  - W:\Application\_Data\se-dnfo\Utils\Interventions\PROD\DisableClient\_[HUB]PROD.bat

### 3.5.1.7 Stopping node managers (SD-0059)

DEV

1. Connect to a XBOW virtual desktop on the XBOW Non Production farm (INTNP account) under the DEV folder and execute the following script :
  - F:\\_ApplicationData\DiogeneForte-DNFO\Utils\Interventions\Development\StopNodeManagers\_EURDEV.bat

QA

1. Connect to a XBOW virtual desktop on the XBOW Non Production farm (INTNP account) under the Office folder and execute the following script :
  - F:\\_ApplicationData\DiogeneForte-DNFO\Utils\Interventions\QA\StopNodeManagers\_[HUB]QA.bat

PREPROD

1. Connect to a XBOW virtual desktop on the XBOW Non Production farm (INTNP account) under the Office folder and execute the following script :
  - F:\\_ApplicationData\DiogeneForte-DNFO\Utils\Interventions\QA\StopNodeManagers\_[HUB]PREPROD.bat

PROD

**Note: First, make sure you have killed all the client sessions before doing this.**

Then, connect to a XBOW virtual desktop on the XBOW Production farm (INT account) under the Office folder and execute the following script :

- F:\\_ApplicationData\DiogeneForte-DNFO\Utils\Interventions\Production\StopNodeManagers\_[HUB]PROD.bat

### 3.5.1.8 Starting node managers (SD-0060)

#### DEV

Connect to a XBOW virtual desktop on the XBOW Non Production farm (INTNP account) under the DEV folder and execute the following script :

- F:\\_ApplicationData\DiogeneForte-DNFO\Utils\Interventions\Development\StartNodeManagers\_EURDEV.bat

#### QA

Connect to a XBOW virtual desktop on the XBOW Non Production farm (INTNP account) under the Office folder and execute the following script :

- F:\\_ApplicationData\DiogeneForte-DNFO\Utils\Interventions\QA\StartNodeManagers\_[HUB]QA.bat

#### PREPROD

Connect to a XBOW virtual desktop on the XBOW Non Production farm (INTNP account) under the Office folder and execute the following script :

- F:\\_ApplicationData\DiogeneForte-DNFO\Utils\Interventions\QA\StartNodeManagers\_[HUB]PREPROD.bat

#### PROD

**Note: First, make sure you have killed all the client sessions before doing the following:**

Connect to a XBOW virtual desktop on the XBOW Production farm (INT account) under the Office folder and execute the following script :

? Further details required.

## 4 Change Procedures

### 4.1 Standard Change xxx

Standard Change xxx - As per Wiebren Van der Zee, This information will be available with new Fixit.

Description of standard changes (when applicable.)

Application		Date	06-08-2004
Procedure		Process Mngt	

Activity	Instruction	Result		Remarks
		<input type="checkbox"/>	<input type="checkbox"/>	
Connect UAT	Login UAT;			
Inform IM	Send e-mail to the originator of the e-mail request			

## 4.2 Standard Change xxx

Standard Change xxx - As per Wiebren Van der Zee, This information will be available with new Fixit.

Description of standard changes (when applicable.)

Application		Date	06-08-2004
Procedure		Process Mngt	

Activity	Instruction	Result	Remarks
		<input checked="" type="checkbox"/>	
		<input checked="" type="checkbox"/>	
Inform IM	Send e-mail to the originator of the e-mail request		

## 5 Processing

### 5.1 Start of Day (see Procedures Manual)

- Dependencies
- Procedures

### 5.2 End of Day (see Process Manual)

- Dependencies
- Procedures

### 5.3 Backup

EUROPE BACKUP - daily, weekly and monthly					
BACKUP	TIME (CET)	Objects	How	Machines involved	Retention
DAILY	EOD (End Of business Day) 18:30h	DBDIOGENE /DBULYSSE	Automatically during closing of DBDiogene	FBNKGGMK1 FBNAKGM K2	40 Days
Weekly	Sunday, 14:00h	All AS400 objects except OS	Scheduled Job	FBNKGGMK1 FBNAKGM K2	45 Days
Monthly	Last business day of the month, 18:30h; no daily Backup at EOD	DBDIOGENE /DBULYSSE	Automatically during closing of DBDiogene	FBNKGGMK1 FBNAKGM K2	1 year

FBNKGGMK1= Production AS400

FNBKGMK2= Backup of FBNKGGMK

US BACKUP - daily, weekly and monthly					
BACKUP	TIME (CET)	Objects	How	Machines involved	Retention
DAILY	Next Business day 16:00h	DBDION/ DBULYN	Automatically during closing of DBDION	FBNKNY01 FBNKNY02	40 Days
Weekly	Sunday, 0:40h	All AS400 objects except OS	Scheduled Job	FBNKNY01 FBNKNY02	45 Days

## 5.4 Interfaces

Require further information on three interfaces. ?

### 5.4.1 Reuters Example

XWPOA409

Reuters interface is activated from the crontab:

```
30 08,12,17 * * 1-5 /home/sys_beh/etc/Reuters.ksh prd
```

Reuters import en export directory:

```
{/w409glo001/g13106/bnk.prd/bnk.run/RTS.IN}
```

```
{/w409glo001/g13106/bnk.prd/bnk.run/RTS.OUT}
```

```
{/w409glo001/g13106/bnk.prd/bnk.run/RTS.TMP}
```

Other reuters directories:

```
{/w409glo001/g13106/reutersclient}
```

## 5.5 Processes Outline

Information pending

### 5.5.1 Example

**NOTE :**

Restores have to be done on two machines simultaneously

FBNKGMK3 and  
FBNKGMK4.

When the two restores are completed, don't forget to verify the joblogs (dsplogbrm) on the two machines.

The lower case 'x' can assume the value 2 , 4 or 6 in the environment involved through the restore.

<b>RESTORE OF DBDIOGENEx AND DBULYSSEx (BE)</b>	<b>RESTORE DE OF DBDIONx AND DBULYNx (NEW YORK)</b>
<p><b>On one of the two machines:</b></p> <p>MIMIX :</p> <ol style="list-style-type: none"> <li>1. In the window "Work with Data Groups".</li> <li>2. End data Group (option 10) DBDIOGENE.</li> <li>3. End data Group (option 10) DBULYSSE.</li> </ol> <p><b>On both machines :</b></p> <p>Cmd:</p> <ul style="list-style-type: none"> <li>• SBMJOB CMD (DLTLIB LIB(DBDIOGENEx))</li> <li>• SBMJOB CMD(DLTLIB LIB(DBULYSSEx)).</li> <li>• STRSQL.</li> <li>• SQL:</li> <li>• CREATE COLLECTION DBDIOGENEx.</li> <li>• CREATE COLLECTION DBULYSSEx.</li> </ul> <p>RESTORE PROCEDURE :</p> <p><u>see</u> 6.1.1 for the procedure</p> <p><b>On one of the two machines:</b></p>	<p><b>On one of the two machines:</b></p> <p>MIMIX :</p> <ol style="list-style-type: none"> <li>1. In the window "Work with Data Groups".</li> <li>2. End data Group (option 10) DBDION.</li> <li>3. End data Group (option 10) DBULYN.</li> </ol> <p><b>On both machines :</b></p> <p>Cmd:</p> <ul style="list-style-type: none"> <li>• SBMJOB CMD(DLTLIB LIB(DBDIONx)).</li> <li>• SBMJOB CMD(DLTLIB LIB(DBULYNx)).</li> <li>• STRSQL.</li> <li>• SQL:</li> <li>• CREATE COLLECTION DBDIONx.</li> <li>• CREATE COLLECTION DBULYNx.</li> </ul> <p>RESTORE PROCEDURE :</p> <p><u>see</u> 6.1.1 for the procedure</p> <p><b>On one of the two machines:</b></p> <p>MIMIX:</p>

<p>MIMIX:</p> <ol style="list-style-type: none"> <li>1. In the window “Work with Data Groups”.</li> <li>2. START DATA GROUP (option 9) DBDIOGENE with good parameters.</li> <li>3. START DATA GROUP (option 9) DBULYSSE with good parameters.</li> </ol>	<ol style="list-style-type: none"> <li>1. In the window “Work with Data Groups”.</li> <li>2. START DATA Group (option 9) DBDION with good parameters.</li> <li>3. START DATA GROUPE (option 9) DBULYN with good parameters.</li> </ol>
--	--

```

                                Start Data Group (STRDG)

Type choices, press Enter.

Data group definition:
  Name . . . . . > DBXXXXXX      Name, *ALL, F4 for list
  System 1 . . . . . > FBNKGMK3   Name, *ALL, *LOCAL...
  System 2 . . . . . > FBNKGMK4   Name, *ALL, *LOCAL...
  Start processes . . . . . *ALL   *ALL, *ALLSRC, *ALLTGT...
  Database journal receiver . . . *CURRENT Name, *LASTPROC, *CURRENT...
  Database sequence number . . . *LAST  1-9999999999, *LASTPROC...
  Object journal receiver . . . *CURRENT Name, *LASTPROC, *CURRENT...
  Object sequence number . . . *LAST  1-9999999999, *LASTPROC...
  Clear pending . . . . . *YES     Character value, *NO, *YES
  Clear error . . . . . *CLRPND   *CLRPND, *YES, *NO
  Show confirmation screen . . . *CLRPND *CLRPND, *YES, *NO
  Set object auditing level . . *YES   *YES, *NO
  Database apply session . . . *ALL   A-F, *ALL

                                                                More...
F3=Exit   F4=Prompt   F5=Refresh   F12=Cancel   F13=How to use this display
F24=More keys

```

### 5.5.2 Restoring the Libraries

In this example/demo DBDIOGENE2 and DBULYSSE2 are restored with the data from the 14/12/04.

## Restoring DBDIOGENE2:

- [Go brms](#)

```
BRMS                      Backup Recovery and Media Services for iSeries
                               System:
FBNKGMK3
Select one of the following:

    1. Media management
    2. Backup

    4. Recovery

    10. Scheduling
    11. Policy administration
    12. Reports

    20. Start console monitor

Selection or command
===> 4
F3=Exit      F4=Prompt      F9=Retrieve      F10=Commands      F12=Cancel
F13=Functions
(C) COPYRIGHT IBM CORP. 1994, 2001. ALL RIGHTS RESERVED.
```

```
BRMRCY                                Recovery                                System:
FBNKGMK3
Select one of the following:
  1. Recovery planning
  2. Perform recovery
  3. Display recovery activity

Selection or command
===> 2
F3=Exit      F4=Prompt      F9=Retrieve      F10=Commands      F12=Cancel
F13=Functions
(C) COPYRIGHT IBM CORP. 1994, 2001. ALL RIGHTS RESERVED.
BRMRCYOPT                                Perform Recovery                                System:
FBNKGMK3
Select one of the following:
  1. Recover system
  2. Recover auxiliary storage pool (ASP)
  3. Recover control group
  4. Recover library
  5. Work with media information
  6. Work with saved objects
  7. Work with saved folders
  8. Work with saved spooled files
  9. Work with saved link information

Selection or command
===> 4
F3=Exit      F4=Prompt      F9=Retrieve      F10=Commands      F12=Cancel
F13=Functions
(C) COPYRIGHT IBM CORP. 1994, 2001. ALL RIGHTS RESERVED.
```



**NOTE :** In this window, use the function key **F09** when choosing the DB for which the restore is being made (Ex : DBDIOGENE2).

```

                                Restore Command Defaults

Type information, press Enter.
Device . . . . . *MEDCLS      Name, *MEDCLS

Parallel device resources:
  Minimum resources. . . . . *SAV      1-32, *NONE, *AVAIL
  Maximum resources. . . . .          1-32, *AVAIL, *MIN
  End of tape option . . . . . *LEAVE  *REWIND, *LEAVE, *UNLOAD
  Option . . . . . *ALL          *ALL, *NEW, *OLD, *FREE
  Data base member option . . . . . *ALL  *MATCH, *ALL, *NEW, *OLD
  Allow object differences . . . . . *ALL

                                *NONE, *ALL, *AUTL,
                                *FILELVL, *OWNER, *PGP

Restore to library . . . . . DBDIOGENE2 Name, *SAVLIB
Auxiliary storage pool . . . . . *SAVASP Name, *SAVASP, 1-32...

More...
F12=Cancel

```

```

                                Select          Recovery          Items

FBNKGMK3

Type options, press Enter. Press F16 to select all.
  1=Select  4=Remove  5=Display  7=Specify object

      Saved          Save          Save          Save          Volume          File          Expire
Objects
Opt  Item          Date          Time          Type          Serial          Sequence          Date
Saved
  1  DBDIOGENE     14/12/04  18:33:04    *FULL    GD1001          58  14/01/05
991
  1  DBULYSSE      14/12/04  18:36:51    *FULL    GD1001          59  14/01/05
802

Bottom
F3=Exit  F5=Refresh  F9=Recovery defaults  F11=ASP View  F12=Cancel

```

**Restore du DBULYSSE2 :**

		Select	Recovery			Items	
FBNKGMK3							
Type options, press Enter. Press F16 to select all.							
1=Select 4=Remove 5=Display 7=Specify object							
	Saved	Save	Save	Save	Volume	File	Expire
Objects	Opt	Item	Date	Time	Type	Serial	Sequence
Saved							Date
		DBULYSSE	14/12/04	18:36:51	*FULL	GD1001	59 14/01/05
802							
Bottom							
F3=Exit F5=Refresh F9=Recovery defaults F11=ASP View F12=Cancel							

**NOTE :** In this window, use the function key **F09** when choosing the DB for which the restore is being made (Ex : DBULYSSE2).

Restore Command Defaults		
Type information, press Enter.		
Device . . . . .	*MEDCLS	Name, *MEDCLS
Parallel device resources:		
Minimum resources. . . . .	*SAV	1-32, *NONE, *AVAIL
Maximum resources. . . . .		1-32, *AVAIL, *MIN
End of tape option . . . . .	<b>*unload</b>	*REWIND, *LEAVE, *UNLOAD
Option . . . . .	*ALL	*ALL, *NEW, *OLD, *FREE
Data base member option . . . . .	*ALL	*MATCH, *ALL, *NEW, *OLD
Allow object differences . . . . .	*ALL	
		*NONE, *ALL, *AUTL,
		*FILELVL, *OWNER, *PGP
Restore to library . . . . .	<b>DBULYSSE2</b>	Name, *SAVLIB
Auxiliary storage pool . . . . .	*SAVASP	Name, *SAVASP, 1-32...
More...		
F12=Cancel		

```

                                Select          Recovery          Items
FBNKGMK3

Type options, press Enter. Press F16 to select all.
  1=Select  4=Remove  5=Display  7=Specify object

      Saved          Save      Save      Save      Volume      File      Expire
Objects
Opt  Item          Date      Time      Type      Serial      Sequence      Date
Saved
  1  DBULYSSE      14/12/04  18:33:04  *FULL  GD1001          59 14/01/05
991

Bottom
F3=Exit  F5=Refresh  F9=Recovery defaults  F11=ASP View  F12=Cancel

```

**The restore process of the data on Dbulyse2 has started.**

**To be executed after each restore**

**\* Go backup/bckmenu**

```

BCKMENU                                BCKMENU Menu

Select one of the following:

  1.  After restore DBDIOGENE-DBULYSSE BE
  2.  After restore DBDIO-DBULY NY

  3.
  4.
  5.
  6.
  7.
  8.
  9.
 10.

Selection or command
===>      1
F3=Exit  F4=Prompt  F9=Retrieve  F12=Cancel
F13=Information Assistant  F16=AS/400 main menu

```

**If option 1 is chosen :**

```
After restore DIOGENE-ULYSSE (RSTUDIOUY1)

Type choices, press Enter.

Library for restore DBDIOGENE . . DBDIOGENE2 Name
Library for restore DBULYSSE . . DBULYSSE2 Name

Bottom
F3=Exit F4=Prompt F5=Refresh F12=Cancel F13=How to use this display
F24=More keys
```

**If option 2 is chosen (X = 4 or X = 6)**

```
After restore DIOGENE-ULYSSE (RSTUDIOUY1)

Type choices, press Enter.

Library for restore DBDIOGENE . . DBDIONEX Name
Library for restore DBULYSSE . . DBULYNX Name

Bottom
F3=Exit F4=Prompt F5=Refresh F12=Cancel F13=How to use this display
F24=More keys
```

## Verifying the restore

- **DSPLOGBRM +F04**

```
Display Log for BRM (DSPLOGBRM)

Type choices, press Enter.

Type . . . . . > *RCY          *ALL, *BKU, *MED, *MAINT,
*...
Time period for log output:
Start time and date:
Beginning time . . . . . *AVAIL      Time, *AVAIL
Beginning date . . . . . *CURRENT    Date, *CURRENT, *BEGIN
End time and date:
Ending time . . . . . *AVAIL      Time, *AVAIL
Ending date . . . . . *CURRENT    Date, *CURRENT, *END
Severity . . . . . 00              00-99
Output . . . . . *                  *, *PRINT

Bottom
F3=Exit   F4=Prompt   F5=Refresh   F10=Additional parameters   F12=Cancel
F13=How to use this display   F24=More keys
```

### 5.5.3 Restoring Objects

Further explanation required.

This demo/example is based on the e-mail below:

```
Is anyone still using DBDIOGENE2/DBULYSSE2 on the development machine/engine ?

Francis, is it possible to restore of the 14/12 in the evening only for :

DBNDDEPOS
DPEQUTRAD
DTRSTITSL
DTRSTITDT

Many thanks!
Katrien.
```

\* **Go Brms**

```
BRMS                      Backup Recovery and Media Services for iSeries
                               System:
FBNKGMK3
Select one of the following:

    1. Media management
    2. Backup

    4. Recovery

    10. Scheduling
    11. Policy administration
    12. Reports

    20. Start console monitor

Selection or command
====> 4

F3=Exit      F4=Prompt      F9=Retrieve      F10=Commands      F12=Cancel
F13=Functions
(C) COPYRIGHT IBM CORP. 1994, 2001. ALL RIGHTS RESERVED.
```

```
BRMRCY                      Recovery
                               System:  FBNKGMK3
Select one of the following:

    1. Recovery planning
    2. Perform recovery
    3. Display recovery activity

Selection or command
====> 2

F3=Exit      F4=Prompt      F9=Retrieve      F10=Commands      F12=Cancel      F13=Functions
(C) COPYRIGHT IBM CORP. 1994, 2001. ALL RIGHTS RESERVED.
```

```
BRMRCYOPT                    Perform Recovery
                               System:  FBNKGMK3
Select one of the following:

    1. Recover system
    2. Recover auxiliary storage pool (ASP)
    3. Recover control group
    4. Recover library
    5. Work with media information
    6. Work with saved objects
    7. Work with saved folders
    8. Work with saved spooled files
    9. Work with saved link information

Selection or command
====> 5

F3=Exit      F4=Prompt      F9=Retrieve      F10=Commands      F12=Cancel      F13=Functions
(C) COPYRIGHT IBM CORP. 1994, 2001. ALL RIGHTS RESERVED.
```

```
Work with Media Information (WRKMEDIBRM)                               FBNKGMK3
```

```

Type choices, press Enter.

Library . . . . . > DBDIOGENE      Name, generic*, *ALL...
Volume . . . . . *ALL                Character value, *ALL
Auxiliary storage pool . . . . . *ALL      Name, 1-255, *ALL, *SYSTEM
Control group . . . . . *ALL            *ALL, *SYSTEM, *BKUGRP,
*SY...
Save type . . . . . *ALL                *ALL, *FULL, *CUML,
*INCR, ...
                                + for more values
Select dates:
  From date . . . . . > 141204        Date, *CURRENT, *BEGIN,
nnnnn
  To date . . . . . > 141204        Date, *CURRENT, *END,
nnnnn
Save status . . . . . *ALL                *ALL, *ERROR,
*NOERROR
Sequence option . . . . . *DATE          *DATE, *LIB, *VOL
Entries to be displayed first . . *LAST    *LAST, *FIRST
From system . . . . . > FBNKGMK1
Output . . . . . *                      *, *PRINT

Bottom
F3=Exit   F4=Prompt   F5=Refresh   F12=Cancel   F13=How to use this display
F24=More keys
Already at bottom of area.

```

```

Work with Media Information
FBNKGMK3

Position to Date . . . . .

Type options, press Enter.
  2=Change  4=Remove  5=Display  6=Work with media  7=Restore
  9=Work with saved objects

Saved
File      Expiration      Save      Volume
Opt Item  Date                  Date      Time      Type      Serial
Sequence
9 DBDIOGENE      14/12/04  18:33:04  *FULL    GD1001    58
14/01/05
    DBDIOGENE      14/12/04  18:40:46  *FULL    GD2001    55
14/01/05

Bottom

F3=Exit   F5=Refresh   F11=Object detail   F12=Cancel

```

```

Work with Saved Objects
FBNKGMK3

Position to Object . . .

```

```

Type options, press Enter.
  4=Remove   5=Display   6=Work with media   7=Restore object
  9=Work with saved members

                                Save                                Save
Message
Opt Object                                Library                                Type                                Date
Time                                Volume                                ID
  7  DBNDDEPOS                                DBDIOGENE                                *FILE                                14/12/04                                18:33:04
GD1001
  7  DBNDDEPOSA                                DBDIOGENE                                *FILE                                14/12/04                                18:33:04
GD1001
  7  DBNDDEPOSB                                DBDIOGENE                                *FILE                                14/12/04                                18:33:04
GD1001
  7  DBNDDEPOSC                                DBDIOGENE                                *FILE                                14/12/04                                18:33:04
GD1001
  7  DBNDDEPOSK                                DBDIOGENE                                *FILE                                14/12/04                                18:33:04
GD1001
  7  DBNDDEPOS0                                DBDIOGENE                                *FILE                                14/12/04                                18:33:04
GD1001
  7  DBNDDEPOS1                                DBDIOGENE                                *FILE                                14/12/04                                18:33:04
GD1001

                                                                More...

F3=Exit   F12=Cancel

```

**NOTE:** In this example, I have only selected the physical file DBNDDEPOS and the logical files with pointers to the latter.

```

                                Select Recovery Items                                FBNKGMK3

Type options, press Enter. Press F16 to select all.
  1=Select   4=Remove   5=Display

Save      Expiration
Opt Object                                Library                                Message                                Type                                Date                                Date
Volume      ID
  1  DBNDDEPOS                                DBDIOGENE                                *FILE                                14/12/04                                14/01/05                                GD1001
  1  DBNDDEPOSA                                DBDIOGENE                                *FILE                                14/12/04                                14/01/05                                GD1001
  1  DBNDDEPOSB                                DBDIOGENE                                *FILE                                14/12/04                                14/01/05                                GD1001
  1  DBNDDEPOSC                                DBDIOGENE                                *FILE                                14/12/04                                14/01/05                                GD1001
  1  DBNDDEPOSK                                DBDIOGENE                                *FILE                                14/12/04                                14/01/05                                GD1001
  1  DBNDDEPOS0                                DBDIOGENE                                *FILE                                14/12/04                                14/01/05                                GD1001
  1  DBNDDEPOS1                                DBDIOGENE                                *FILE                                14/12/04                                14/01/05                                GD1001

                                                                Bottom

F3=Exit   F5=Refresh   F9=Recovery defaults   F12=Cancel
F14=Submit to batch   F16=Select all

```

After selecting the objects for the restore in this screen, **press F09** in order to choose the DB in which the restore is made.

```

Restore Command Defaults

Type information, press Enter.
Device . . . . . *MEDCLS      Name, *MEDCLS

Parallel device resources:
  Minimum resources. . . . . *SAV          1-32, *NONE, *AVAIL
  Maximum resources. . . . .              1-32, *AVAIL,
*MIN
End of tape option . . . . . *UNLOAD      *REWIND, *LEAVE,
*UNLOAD
Option . . . . . *ALL          *ALL, *NEW,
*OLD, *FREE
Data base member option . . . . . *ALL          *MATCH, *ALL, *NEW, *OLD
Allow object differences . . . . . *ALL          *NONE, *ALL, *AUTL

                                           *FILELVL, *OWNER, *PGP

Restore to library . . . . . DBDIOGENE2 Name, *SAVLIB
Auxiliary storage pool . . . . . *SAVASP      Name, *SAVASP, 1-32...
                                           More...

F12=Cancel

```

**The second phase to execute after each restore:**

**\* Go backup/bckmenu**

```

BCKMENU                      BCKMENU Menu

Select one of the following:

  1. After restore DBDIOGENE-DBULYSSE
  2.
  3.
  4.
  5.
  6.
  7.
  8.
  9.
 10.

Selection or command
===>      1
F3=Exit   F4=Prompt   F9=Retrieve   F12=Cancel
F13=Information Assistant   F16=AS/400 main menu

```

```

After restore DIOGENE-ULYSSE (RSTDIUOLY1)

Type choices, press Enter.

Library for restore DBDIOGENE .   DBDIOGENE2   Name
Library for restore DBULYSSE . .   DBULYSSE2   Name

Bottom
F3=Exit   F4=Prompt   F5=Refresh   F12=Cancel   F13=How to use this display
F24=More keys

```

**Verification of the Restore :**

- **DSPLOGBRM +F04**

```

Display Log for BRM (DSPLOGBRM)

Type choices, press Enter.

Type . . . . . > *RCY           *ALL, *BKU, *MED, *MAINT, *...
Time period for log output:
  Start time and date:
  Beginning time . . . . . *AVAIL       Time, *AVAIL
  Beginning date . . . . . *CURRENT     Date, *CURRENT, *BEGIN
  End time and date:
  Ending time . . . . . *AVAIL         Time, *AVAIL
  Ending date . . . . . *CURRENT       Date, *CURRENT, *END
Severity . . . . . 00                00-99
Output . . . . . *                    *, *PRINT

Bottom
F3=Exit   F4=Prompt   F5=Refresh   F10=Additional parameters   F12=Cancel
F13=How to use this display   F24=More keys

```

## 5.5.4 Different LTO Bus

### TAPMLAB1 Bus:

#### Dspdevd TAPMLAB1

```

                                Display Device Description
                                04/01/05 13:21:23
                                FBKGMK4

Device description . . . . . : TAPMLAB1
Option . . . . . : *BASIC
Category of device . . . . . : *MLB

Device class . . . . . : *TAP
Resource name . . . . . : TAPMLB01
Device type . . . . . : 3583
Device model . . . . . : 001
Online at IPL . . . . . : *YES
Resource allocation priority . . . . . : *JOB
Initial mount wait time . . . . . : *JOB
End of volume mount wait time . . . . . : *JOB
Generate cartridge ids . . . . . : *VOLID
Robot device descriptions . . . . . :
  Robot device 1 . . . . . : *NONE
  Robot device 2 . . . . . :

More...

Press Enter to continue

F3=Exit  F11=Display keywords  F12=Cancel

```

### QSYS/WRKHDWRSC TYPE(\*STG)

```

                                Work with Storage Resources
                                System:  FBKGMK4

Type options, press Enter.
  7=Display resource detail  9=Work with resource

Opt  Resource      Type-model  Status      Text
-----
CMB02      268C-001  Operational  Combined function IOP
DC02       6B02-001  Operational  Storage Controller
CMB05      2844-001  Operational  Combined function IOP
DC01       2757-001  Operational  Storage Controller
CMB07      2844-001  Operational  Storage Controller
DC05       2749-001  Operational  Storage Controller
CMB12      2844-001  Operational  Storage Controller
DC07       2765-001  Operational  Storage Controller
  7  TAPMLB01      3583-001  Operational  Tape Library
CMB01      2844-001  Operational  Storage Controller
DC03       2749-001  Operational  Storage Controller
TAPMLB05   3581-017  Operational  Tape Library
CMB03      2844-001  Not detected  Storage Controller
DC04       2765-001  Not detected  Storage Controller
TAPMLB06   3583-001  Not detected  Tape Library

Bottom

F3=Exit  F5=Refresh  F6=Print  F12=Cancel
Already at top of area.

                                Display Resource Detail

```

```

System:
FBNKGMK4
Resource name . . . . . : TAPMLB01
Text . . . . . : Tape Library
Type-model . . . . . : 3583-001
Serial number . . . . . : 00-6071000
Part number . . . . . :

Physical location:
Logical address:
PCI bus:
  System bus          37
  System board       0
  System card        32
Library:
  I/O adapter        2

Press Enter to continue.

F3=Exit  F5=Refresh  F6=Print  F12=Cancel

```

For FBNKGMK4 the TAPMLAB1 is on bus 37.

**Bus du TAPMLX01 :**

**Dspdevd TAPMLX01**

```

Display Device Description
04/01/05 13:42:32
FBNKGMK1

Device description . . . . . : TAPMLX01
Option . . . . . : *BASIC
Category of device . . . . . : *MLB

Device class . . . . . : *TAP
Resource name . . . . . : TAPMLB25
Device type . . . . . : 3583
Device model . . . . . : 001
Online at IPL . . . . . : *YES
Resource allocation priority . . . : *JOB
Initial mount wait time . . . . . : *JOB
End of volume mount wait time . . : *JOB
Generate cartridge ids . . . . . : *VOLID
Robot device descriptions . . . . . :
  Robot device 1 . . . . . : *NONE
  Robot device 2 . . . . . :

More...

Press Enter to continue

F3=Exit  F11=Display keywords  F12=Cancel

```

QSYS/WRKHDWRSC TYPE(\*STG)

Work with Storage Resources

System: FBKNGMK1

Type options, press Enter.  
7=Display resource detail 9=Work with resource

Opt	Resource	Type-model	Status	Text
	CMB02	268C-001	Operational	Combined function IOP
	DC02	6B02-001	Operational	Storage Controller
	CMB01	2843-001	Operational	Combined function IOP
	DC01	2748-001	Operational	Storage Controller
	CMB07	2843-001	Operational	Combined function IOP
	DC05	2748-001	Operational	Storage Controller
	CMB03	2844-001	Operational	Storage Controller
	DC03	2749-001	Operational	Storage Controller
	TAPMLB23	3581-017	Operational	Tape Library
	CMB04	2844-001	Operational	Storage Controller
	DC04	2765-001	Operational	Storage Controller
7	TAPMLB25	3583-001	Operational	Tape Library
	DC07	2749-001	Not detected	Storage Controller
	CMB05	2844-001	Operational	Storage Controller
	DC06	2765-001	Operational	Storage Controller

More...

F3=Exit F5=Refresh F6=Print F12=Cancel

Display Resource Detail

System: FBKNGMK1

Resource name . . . . . : TAPMLB25  
Text . . . . . : Tape Library  
Type-model . . . . . : 3583-001  
Serial number . . . . . : 00-00000  
Part number . . . . . :

Physical location:  
Logical address:  
PCI bus:  
System bus 38  
System board 0  
System card 32  
Library:  
I/O adapter 2

More...

Press Enter to continue.

F3=Exit F5=Refresh F6=Print F12=Cancel

For FBKNGMK1 the TAPMLX01 is on bus 38.  
To switch the TAPMLX01 you have to use bus 38.  
**Proceed the same way to determine the bus of other LTO.**

**NOTE :**  
If you cannot set tapmlx01 vary on, you have to switch it with FBKNGMK1 against to unassigned hardware using bus 38, then switch it back to FBKNGMK1.

You can then use the command: wrkcfgsts \*dev tapm.

## 6 Disaster Recovery

Missing Work instructions for sections 7.1 to 7.5. Information pending.

### 6.1 Introduction

- Different Situations
- Dependencies
- Extra procedures / scripting
- Contactpersons

### 6.2 Procedural Failover / DR steps

Nr.	Who	Procedure	Time	Done
01	Proc. Mngt	Inform people involved <ul style="list-style-type: none"><li>▪ Process Management UNIX</li><li>▪ Infrastructure Operations Bridge</li><li>▪ Application managers</li><li>▪ Network</li><li>▪ ESS support</li></ul>		
02	Operations	Check batch-processing		
03		<ul style="list-style-type: none"><li>▪ Stop processing on alternate location</li><li>▪ Free up space</li><li>▪ Restore files / dbms / application</li><li>▪ Start processing on alternate location</li></ul>		
04	Proc. Mngt	Check processing		
05	Users	Check application		
06	Proc. Mngt	Inform people as in step 1		

**Note:** Refer to an overall procedure when the application recovery/failover is handled by that procedure

### 6.3 Alternate Location Characteristics

See Process Manual.

### 6.4 Work Instructions for Construction of the Alternate Location

- Dependencies
- Procedures
- Contact persons

### 6.5 Re-construct the Production environment

- Dependencies

- Procedures
- Contactpersons

## 7 Appendix: Commands

Take the brackets { } out of the command

Command	Description
{ls -lart}	
{df -k}	
{lpstat -W}	Show status of the printers on unix level
{SP-STATUS}	Show status of the printers on jshell
{smitty print}	Admin printers on unix level
{telnet <i>ip-address</i> }	Test network connections
{lsuser}	Gives account and status information about a user
{topas}	Performance commands
{sar}	Performance commands
{ps aux}	Performance commands
{crontab -l}	List scheduled jobs
{killusers}	Kill user because of hanging session
{lsuser}	Show info of a certain user

## 8 Appendix: Directories

Unable to validate - No access to application

Directory	Description
{/w409jspool/jobs/formqueue_X}	Production spooler

## 9 Appendix: Keyboard Mappings – Reflection

Unable to validate - No access to application.

Note: Only when applicable

Directory	Description
F1 {Ctrl + U + Enter}	Previous screen
F2 {Ctrl + B + Enter}	Previous page or record
F2 {Ctrl + F + Enter}	Next page
F2 {Ctrl + E + Enter}	Exit
F2 {Ctrl + V + Enter}	Commit
F2 {Ctrl + W + Enter}	
F2 {Ctrl + J + Enter}	
F2 {Ctrl + N + Enter}	

## 10 Appendix: Diagnostic Monitoring

### 10.1 Daily Monitoring Process – Morning Check Procedures

This does not apply to Diogene. Monitoring is necessary on occasion for diagnostic purposes. This section contains the AS 400 Manual for reference. (Remove section and reference AS400 Manual?)

#### CONTROL LIST 2007

##### **WHEN WE ARRIVE IN THE MORNING**

**FBNKGMK1** : CHECK AND REPLY TO MESSAGES QSYSOPR  
**FBNKGMK1** : CONTROL STATUS WRITERS  
**FBNKGMK2** : CHECK AND REPLY TO MESSAGES  
**FBNKGMK3** : CHECK IF DAILY BACKUP IS DONE AND OK  
**FBNKGMK4** : CHECK MESSAGES  
**FBNKGMK4** : CHECK IF DAILY BACKUP IS DONE AND OK  
**FBNKGMK1** : CHECK IF DAILY BACKUP ULIM IS DONE AND OK (**BCKULx1-2**)  
**FBNKNY01** : CONTROL IF REMOTE WRITER **PRTNY01** IS STARTED  
**FBNKNY01** : REPLY ( C )ANCELON MESSAGE ONLINE RATES IN QSYSOPR  
**FBNKNY01** : CONTROL AUDIT BACKUP (**BCKAUD1 - BCKAUD2**)  
**FBNKGMK1** : EVERY HALF YEAR : ARCHIVE FAX  
**GMK1 - NY01** : **IF DAY STARTED IN WEEKEND** : extra control all automatic procedures  
**FBNKGMK1** : CONTROL MESSAGES PILOT (DSPMSG ULYPILOT)

##### **DURING THE MORNING**

**FBNKGMK1** : CHECK RECEPTION ON-LINE RATES RDS  
**FBNKNY01** : CHECK IF NO BLOCKING FACTORS FOR CLOSE DAY  
**FBNKGMK1** : CHECK LISTING RECONCILIATION  
**FBNKNY01 - 02** : **CHECK MIMIX AND MESSAGES**  
**FBNKNY01 - 02** : CHECK WEEKLY BACKUP  
**FBNKGMK1 & 2** : REGULARY CHECK OF MESSAGES  
**FBNKGMK1** : REGULARY CHECK OF COUNTERS AND STATUS IN CONTROL PANEL  
**FBNKGMK1** : WRKCFGSTS \*DEV **W\*** : **VARY ON** IF VARIED OFF  
**FBNKGMK1 GMK2** :CHECK MIMIX :DATA GROUPS + OBJECTS  
**FBNKGMK3 GMK4** :CHECK MIMIX :DATA GROUPS + OBJECTS  
**FBNKGMK1** : ON **MONDAY** : CHECK IF SAVEWEEK IS DONE AND OK (MARAIS)

**FBNKGMK2** : ON MONDAY : CHECK IF SAVEWEEK IS DONE AND OK (HAREN)  
**FBNKGMK3** : ON MONDAY :CHECK IF SAVEWEEK IS DONE AND OK (MARAIS)  
**FBNKGMK4** : ON MONDAY : CHECK IF SAVEWEEK IS DONE AND OK (HAREN)  
**FBNKNY01** : CONTROL IF DAILY BACKUPSAVEFILE IS DONE  
**FBNKNY01** : IN BRMS : CHECK IF COPY SAVEFILEBACKUP ON TAPE IS OK  
**FBNKGMK1** : CONTROL STATUS REJECT ULYSSE IN CONTROL PANEL

## **AFTERNOON**

**FBNKGMK1** :CHECK MIMIX :DATA GROUPS + OBJECTS  
**FMK1** : Nbr of extracts Contracts in Forrec counters must be > 0  
**FBNKGMK1** 14H00 CHECK COUNTERS PRODUCTS GATEWAY > 0  
**FBNKGMK1** : 15TH EVERY MONTH : CREATE AND SEND PRIVILIGES LISTING  
**GMK1 : FRIDAY** : DELETE SAVED SPLF ULYPILOT - ULYOPR OF WEEK BEFORE  
**GMK1 : FRIDAY** : DELETE SAVED SPLF PRTLUAITS OF WEEK BEFORE  
**NY01 : FRYDAY : DELETE SAVED SPOOLFILES OLDER THAN 2 WEEKS**  
**FRIDAY** : DELETE OUTQBRMS FM1 - FM2 - FM3 - FM4  
**FBNKGMK1** : CHECK IF NO TAPES ON TAPMLX01 AND TAPMLAB1 (DSPTAPSTS)  
**FBNKGMK3 - 4** : CHECK IF NO TAPES ON TAPMLX01 AND TAPMLAB1 (DSPTAPSTS)  
**FBNKGMK2** : CHECK IF NO TAPES ON TAPMLX01 AND TAPMLAB1 (DSPTAPSTS)  
**FBNKGMK1** : 16H00 : CONTROL COUNTERS TRAX IN CONTROL PANEL  
**FBNKGMK1** : CONTROL STATUS REJECT ULYSSE (REGULAR FROM 16H00)  
**FBNKGMK1 & 2** : REGULARY CHECK OF MESSAGES  
**FBNKGMK1** :WRKSYSSTS : CONTROL % SYSTEM ASP USED  
**FBNKGMK2** : WRKSYSSTS : CONTROL % SYSTEM ASP USED  
**FBNKGMK1** : REGULARY CHECK OF COUNTERS AND STATUS IN CONTROL PANEL  
**FBNKGMK1** : CONTROL IF DAILY BACKUPSAVEFILE IS DONE  
**FBNKGMK1** : IN BRMS : CHECK IF COPY SAVEFILEBACKUP ON TAPE IS OK

## **FINAL ACTIONS BEFORE LEAVING**

**FBNKGMK1** : FIRST WORKING DAY OF THE WEEK : REORGANIZE ULYSSE  
**FBNKGMK4** : CHECK MESSAGES  
**FBNKGMK1 & 2** : LAST CONTROL FOR MESSAGES  
**FBNKNY01 - 02** : CHECK MESSAGES  
**NY01 - 02** : CHECK IF SUPERQUEUE NT - ONLINE RATES - GATEWYS ARE ACTIVE

**FBNKG MK1 : CONTROL MESSAGES PILOT (DSPMSG ULYPILOT)**  
**FBNKG MK1 : CHECK IF PRT11 HAS STATUS STR (STARTED)**  
**FBNKG MK1 : ON MONDAY : TEMPORARY % ADDRESSES USED < 30 %(wrksyssts)**

## 10.1.1 SD-0036-Monitoring AS400

### Content

The aim of this document is to help operator to connect and monitor AS/400.

```
FORTIS BANK                               Sign On
                                           System . . . . . : FBNKG MK1
                                           Subsystem . . . . : QINTER
                                           Display . . . . . : W12X0263A

User . . . . . ULYOPR
Password . . . . . Your password
Program/procedure . . . . .
Menu . . . . .
Current library . . . . .

          G L O B A L   M A R K E T

                Iseries

          >>> P R O D U C T I O N   U S   <<<

The information made available in order to allow you to work is confidential ,
any misuse is prohibited.

(C) COPYRIGHT IBM CORP. 1980, 2003.
```

## 10.1.2 How to Monitor AS/400 During the Day:

There are three ways to monitor AS/400:

1. Command WRKACTJOB.
2. Command Dspmsg Qsysopr.
3. Ulysse Control Panel menu.

### 10.1.2.2 Command wrkactjob

Connect to the AS/400 (FBNKG MK1) using user ULYOPR.

On the line command type WRKACTJOB

```

ULYOPR                                     22/01/07 17:03:41
Select one of the following:

    1. Diogene tasks
    2. Ulysse tasks
    3. Transmission AS/400 to Host tasks
    4. NT tasks
    5. Recovery tools
    6. GATEWAY tasks
    7. Tape to Host rescue tasks
    8. Trax Tasks
    9. RDS rescue tasks
    10. Control Panel

    60. More task options
    80. Temporary sign-off
    90. Sign off
Selection or command
====> WRKACTJOB

F3=Exit   F4=Prompt   F9=Retrieve   F12=Cancel
F13=Information Assistant   F16=AS/400 main menu

```

```

                                     Work with Active Jobs
                                     22/01/07 17:05:31
CPU %:      36.5      Elapsed time: 00:34:04      Active jobs: 423
Opt  Subsystem/Job  User      Type  CPU %  Function  Status
    NTDIO          QSYS      SBS    .0      DEQW
    NTINTCTRX     ULYOPR    BCH    .1      CMD-NTSERV21  TIMW
    NTINTCTRX     ULYOPR    BCH    .2      CMD-NTSERV21  TIMW
    NTINTCTRX     ULYOPR    BCH    .1      CMD-NTSERV21  TIMW
    NTINTCTRX     ULYOPR    BCH    .1      CMD-NTSERV21  TIMW
    NTINTCTRX     ULYOPR    BCH    .1      CMD-NTSERV21  TIMW
    NTINTCTRX     ULYOPR    BCH    .1      CMD-NTSERV21  TIMW
    NTINTCTRX     ULYOPR    BCH    .1      CMD-NTSERV21  TIMW
    NTINTCTRX     ULYOPR    BCH    .1      CMD-NTSERV21  TIMW
    NTINTCTRX     ULYOPR    BCH    .1      CMD-NTSERV21  TIMW
    NTINTCTRX     ULYOPR    BCH    .1      CMD-NTSERV21  TIMW
    NTINTCTRX     ULYOPR    BCH    .1      CMD-NTSERV21  TIMW
    NTINTCTRX     ULYOPR    BCH    .1      CMD-NTSERV21  TIMW
    NTINTCTRX     ULYOPR    BCH    .1      CMD-NTSERV21  TIMW
    NTINTCTRX     ULYOPR    BCH    .1      CMD-NTSERV21  TIMW
    NTINTCTRX     ULYOPR    BCH    .2      CMD-NTSERV21  TIMW
    NTINTCTRX     ULYOPR    BCH    .1      CMD-NTSERV21  TIMW
    NTINTCTRX     ULYOPR    BCH    .1      CMD-NTSERV21  TIMW
    NTINTCTRX     ULYOPR    BCH    .2      CMD-NTSERV21  TIMW
    NTINTCTRX     ULYOPR    BCH    .2      CMD-NTSERV21  TIMW
                                     More...

====>
F21=Display instructions/keys
F21=Display instructions/keys

```

The status of each job must be different from MSGW (message waiting); MSGW mean there is a message needing reply in the message queue QSYSOPR.

### 10.1.2.3 DSPMSG QSYSOPR

On the line command type DSPMSG QSYSOPR

```

OPERA10                               Operator tasks                               FBKNGMK1
ULYOPR                                  22/01/07 17:03:41
Select one of the following:

    1. Diogene tasks
    2. Ulysse tasks
    3. Transmission AS/400 to Host tasks
    4. NT tasks
    5. Recovery tools
    6. GATEWAY tasks
    7. Tape to Host rescue tasks
    8. Trax Tasks
    9. RDS rescue tasks
   10. Control Panel

   60. More task options
   80. Temporary sign-off
   90. Sign off
Selection or command
===> DSPMSG QSYSOPR

F3=Exit  F4=Prompt  F9=Retrieve  F12=Cancel

```

```

                                Work with Messages                                System:  FBKNGMK1
Messages in: QSYSOPR

Type options below, then press Enter.
  4=Remove  5=Display details and reply

Opt  Message
      Messages needing a reply
      (No messages available)

      Messages not needing a reply
      File XFB/BNDCOUPN(BNDCOUPN) sent to BEAIXDN1
      From . . : INTERPEL      11/12/06  04:52:59
      File XFB/BNDFIXNG(BNDFIXNG) sent to BEAIXDN1
      From . . : INTERPEL      11/12/06  04:52:41
      File XFB/BNDREDEM(BNDREDEM) sent to BEAIXDN1
      From . . : INTERPEL      11/12/06  04:52:11
      File XFB/CASHALLF(CASHALLF) sent to BEAIXDN1
      From . . : INTERPEL      11/12/06  04:38:32
                                                    More...

F1=Help  F3=Exit  F5=Refresh  F16=Remove messages not needing a reply
F17=Top  F18=Bottom  F24=More keys

```

This screen shows you a list messages: Any messages needing a reply (inquiry messages that are unanswered). To have more information about message type option 5 in front of the message.

This an example from DEV

In this case, there is a message needing a reply.

```

                                Work with Messages

```

System: FBKGMK3

Messages in: QSYSOPR

Type options below, then press Enter.  
 5=Display details and reply

Opt Message

Messages needing a reply

**5** Unable to allocate a record in file ULIM\_ACT\_J (R C G D F).

Messages not needing a reply

File XFB/ASSETPOSF(ASSETPOSF) sent to NLSUNWS3  
 From . . : INTERPEL 11/12/06 15:00:32  
 Request transfer for file XFB/ASSETPOSF(ASSETPOSF) with application  
 DNFOCAP0 to NLSUNWS3 started  
 From . . : X33041 11/12/06 15:00:29

More...

F1=Help F3=Exit F5=Refresh F12=Cancel F17=Top F18=Bottom  
 F21=Select assistance level F22=Display list details

Additional Message Information

Message ID . . . . . : RNQ1218  
 Date sent . . . . . : 09/12/06 Time sent . . . . . : 04:38:07

Message . . . . : Unable to allocate a record in file ULIM\_ACT\_J (R C G D F).

Cause . . . . . : RPG procedure ULIM\_CONV in program ULIM/ULIM\_CONV at statement \*INIT is unable to allocate a record in file ULIM\_ACT\_J. The record may be allocated to another process with the file under commitment control. The actual file is ULIM/ULIM\_ACT\_J(ULIM\_ACT\_J).

Recovery . . . : Check the job log for more information on the cause of the error and contact the person responsible for program maintenance.

Possible choices for replying to message . . . . . :  
 R -- Retry the input operation.  
 D -- Obtain RPG formatted dump.

More...

Type reply below, then press Enter.  
 Reply . . . .

F1=Help F3=Exit F6=Print **F9=Display message details** F12=Cancel  
 F21=Select assistance level

To display message details press the function key **F9**.

```
Display Message Details

Message ID . . . . . : RNQ1218      Severity . . . . . : 99
Date sent . . . . . : 09/12/06      Time sent . . . . . : 04:38:07
Message type . . . . . : Inquiry
From . . . . . : X33041      CCSID . . . . . : 65535

From job . . . . . : ULIM_C_POT
  User . . . . . : X33041
  Number . . . . . : 486767

From program . . . . . : QRNXIE

To message queue . . . . . : QSYSOPR
  Library . . . . . : QSYS

Time sent . . . . . : 04:38:07.095584

                                                    Bottom

Press Enter to continue.

F1=Help  F3=Exit  F12=Cancel
```

### 10.1.2.4 ULYSSE Control Panel

Select 10 to access to Control Panel.

```
OPERA10                      Operator tasks                      FBNKGMK1
  ULYOPR                      22/01/07  17:21:30
Select one of the following:

  1. Diogene tasks
  2. Ulysse tasks
  3. Transmission AS/400 to Host tasks
  4. NT tasks
  5. Recovery tools
  6. GATEWAY tasks
  7. Tape to Host rescue tasks
  8. Trax Tasks
  9. RDS rescue tasks
 10. Control Panel
 60. More task options
 80. Temporary sign-off
 90. Sign off
Selection or command
===> 10

F3=Exit  F4=Prompt  F9=Retrieve  F12=Cancel
F13=Information Assistant  F16=AS/400 main menu
```

```

ULYOPR                                     Ulysse Control Panel
FBNKGMK1
W12X0263B
22/01/07 17:23:07

Dates      J-2      J-1      J      J+1      J+2      Status
Diogene    2007-01-18 2007-01-19 2007-01-22 2007-01-23 2007-01-24 OPEN
Ulysse     2007-01-18 2007-01-19 2007-01-22 2007-01-23      OPEN

Diogene
Credit-Router
Status permit logon . . . OPEN
Send Active - Reject : YES - NO
Status permit batch . . . OPEN
Receive Active      : YES
Status TRAX . . . . . ACTIVE
Decode Active - Reject : YES - YES
Incomplete - To Enrich . . . 6 - 9
Invest Negative position NO
RDS Extract . . . . . ACTIVE
Cash Flow Manager . . . . . ACTIVE
FAX
Status reject . . . . . : YES 96
Option to enrich . . . . . : NO
Classic Product to enrich: YES 2
Papier to enrich . . . . . : YES 15
C & F - IRS/CRS to enrich: NO
Forward-MEC to enrich . . : NO
ABS to enrich . . . . . : NO
FRA & Options to enrich : NO
Repo to enrich . . . . . : YES
More...
F3=Exit F5=Refresh F12=Cancel

Ulysse . . . . . : NO
Cellule Titres . . . . . : NO
Zone-Order . . . . . : NO
Reco. MEC . . . . . : NO
Covers MEC . . . . . : NO
Gateway: Doubles: NO 0
BONDS: YES ATS : NO RMT : NO
DTS : NO SOP : YES RBR : NO
BRC : NO GENPR: NO FXO : NO
Deposit Covers LU . . . : NO
Deposit Covers NL . . . : NO
E-GMK . . . . . : NO

SuperQueue
Difference - Sts : NO - ACTIVE 1

```

The status of Diogene and the one of Ulysse must be open.

The status of “permit logon” and “permit batch” must be open.

The status of Trax must be active.

At the end of the day the counter of incomplete and of “To Enrich” must be 0.

The status of “RDS Extract” must be active.

The status of Cash Flow Manger must be active.

**SuperQueue:**

The STS must be “ACTIVE”.

**Credit-Router :**

The status of “Send Active”, “Receive Active” and “Decode Active “ must be “YES”

```

ULYOPR                               Ulysse Control Panel                               FBKGMK1
W12X0263B                            22/01/07 17:23:07

Dates  J-2      J-1      J      J+1      J+2      Status
Diogene 2007-01-18 2007-01-19 2007-01-22 2007-01-23 2007-01-24 OPEN
Ulysse  2007-01-18 2007-01-19 2007-01-22 2007-01-23                OPEN

Diogene                               Reject status                               Credit-Router
Status permit logon . . . . . OPEN      Ulysse . . . . . : NO                      Send Active - Reject : YES - NO
Status permit batch . . . . . OPEN      Cellule Titres . . . . . : NO              Receive Active . . . . . : YES
Status TRAX . . . . . ACTIVE            Zone-Order . . . . . : NO                  Dscode Active - Reject : YES - YES
Incomplete - To Enrich . . . . . 6 -    Reco. MEC . . . . . : NO
Invest Negative position NO              Covers MEC . . . . . : NO
RDS Extract . . . . . ACTIVE            Gateway: Doubles: NO 0
Cash Flow Manager. . . . . ACTIVE        BONDS: YES  ATS : NO  RMT : NO
FAX                                       DTS : NO  SOP : YES  RBR : NO
Status reject . . . . . YES 96          ERC : NO  GENPR: NO
Option to enrich . . . . . NO           RTS : NO  SUPER: NO  FXO : NO
Classic Product to enrich: YES 2        Deposit Covers LU . . . . . : NO
Papier to enrich . . . . . YES 15       Deposit Covers NL . . . . . : NO
C & F - IRS/CRS to enrich: NO          E-GMK . . . . . : NO
Forward-MEC to enrich . . . . . NO
ABS to enrich . . . . . NO
FRA & Options to enrich : NO
Repo to enrich . . . . . YES 1
F3=Exit  F5=Refresh  F12=Cancel

More...

```

Pressing Function Key F5 all counters could be increased and could be respectively equal.

**The counters below should be equal:**

- Last RRN in events.
- In Ulysse with Ret.
- In Ulysse without Ret.
- Read by Dispatcher.
- Processed in RDS Extr.
- Processed in Cash Flow.

**Trax Counters should be equal:**

- Last SeqN in events TRAX.
- Processed in TRAX.

**Bonds Counters should be equal:**

- Last RRN in Bonds Orders.
- Processed by Printer.

**Covers Counters should be equal.**

- Covers: Last Sequence.
- Processed in Diogene.

**Deposit Covers LU counters should be equal:**

- Last seq received .
- Processed in Diogene.

**Deposit Covers NI counters should be equal:**

- Last seq received.

Processed in Diogene.

**Ulysse counters:**

“Last RRN in event” and the “Processed in E-GMK” should be equal.

**SCHEDULE Counters should be equal.**

In Host with Retention .

In Host without Retention.

**CAPSCHEDED counters below should be equal.**

Last RRN in CAPSCHEDED Day .

In Host with Retention.

In Host without Retention.

**REPOSCHD counters below should be equal.**

Last RRN in REPOSCHD Day.

In Host with Retention .

In Host without Retention.

**HSTBOND SD counters below should be equal.**

Last RRN in HSTBOND SD.

Processed in Host.

**TITRES Counters below should be equal.**

TITRES : Last seq received.

Processed in Diogene.

**ZoneOrder counters below should be equal.**

ZoneOrder : Last seq received

Processed in Diogene . . :

**Reco MEC counters below should be equal.**

Reco MEC : Last seq received

Processed in Dio/Uly

**Credit-Router Counters should be equal.**

“Last Sequen”, “Max(Sequence) decoded” and “send to” should be equal.

“Last RRN Received” and “Decoded” should be equal.

**SuperQueue counters below should be equal:**

Local counter

Sent counter

Gateway:

All Gateway Status must be “YES” (active) and their counters respectively should be equal.

**Cellule Titres:**

Staus of Received from Host - Inject to Dio must be Active.

**Zone-Order status below must be active.**

Received from Host

Inject to Dio:

**Deposit Covers LU status below must be active**

Received from MQS.

Inject to Dio.

**Deposit Covers NL status below must be active.**

Received from MQS.

Inject to Dio.

*This screen will be replaced with the full view*

ULYOPR			Ulysse Control Panel
FBNKGMK1			
W12X0263B			
22/01/07 17:28:58			
References			
Diogene . . . . .	: 15669	Treasury Devises Origine Z	: 13561
Ulysse . . . . .	: DGV52869	Global payment Notice . .	: PAA19185
Deposit Covers . . . .	: YAZ21707		
Bonds			
Open Orders . . . . .	: 00045	<b>FORREC status</b>	
		Extract pre-settlement of the trades	<b>active YES</b>
MAO - Fax counters			
Comptability service	Last Fax	FORREC counters	
Last Sequence in FORRECEQU :	<b>65746</b>	Last Sequence in FORRECFT :	<b>253018</b>
11820	00000	Last Seq extracted . . . :	<b>252848</b>
Last Seq extracted . . . :	<b>65746</b>	Last Sequence in FORRECLOP :	<b>34849</b>
11829	00000	Last Seq extracted . . . :	<b>34804</b>
Last Sequence in FORRECREP :	<b>150898</b>	Last Sequence in FORRECBND :	<b>410860</b>
11831	00000	Last Seq extracted . . . :	<b>410792</b>
Last Seq extracted . . . :	<b>150880</b>		
17878	00000		
Last Sequence in FORRECTFT :	<b>16299</b>		
Last Seq extracted . . . :	<b>16298</b>		
		Contracts:	
		Nbr of extraction FUT . .	: 2
Nbr of extraction EQU . .	: 1		

```

Nbr of extraction REP . :          19          Nbr of extraction LOP . :          2
Nbr of extraction TFT . :           7          Nbr of extraction BND . :         20
                                           Positions:
                                           Nbr of extraction FUT . :          1
                                           Nbr of extraction LOP . :          1
More...
  F3=Exit    F5=Refresh    F12=Cancel

```

FORREC status below must be active

Extract pre-settlement of the trades

```

ULYOPR                                     Ulysse Control Panel
FBNKG MK1
W12X0263B
22/01/07 17:42:54

Dates
First day open of previous month . . . : 2006-12-01
Last day open of previous month . . . : 2006-12-29
Last day calendar of previous month . . : 2006-12-31
First day open of current month . . . . : 2007-01-02
Last day open of current month . . . . : 2007-01-31
Last day calendar of current month . . . : 2007-01-31
Last but one run-date of previous month : 2006-12-28
Send payment orders . . . . . : 2007-01-29
Maturity sheet . . . . . : 2007-01-30
Previous Last day open of current month : 2007-01-30
Parameters
SQL Id . . . . . : UL

More...
  F3=Exit    F5=Refresh    F12=Cancel

```

```

ULYOPR                                     Ulysse Control Panel
FBNKG MK1
W12X0263B
22/01/07 17:54:12

Monthly Processing
Monthly reporting & EAC's . . . . . : N          Y=Yes, N=No
Date last processed . . . . . : 2007-01-02
Monthly sending EAC's to ASI . . . . . : N          Y=Yes, N=No
Date last processed . . . . . : 2007-01-03
Monthly Reval Bonds . . . . . : N          Y=Yes, N=No
Date last processed . . . . . : 2007-01-02

Bottom
  F3=Exit    F5=Refresh    F12=Cancel

```

This Array shows you each element in the Control Panel and its correspondent job

Satus Control Panel	JOB name
Diogene counters Last RRN in events . . . : 19499 In Ulysse with Ret. . . : 19494 In Ulysse without Ret.: 19499 Read by Dispatcher . : 19499 Processed in RDS Extr.: 19499 Processed in Cash Flow: 19499	All jobs with contracts creation. INJULY INJULY_NT DISPATCHER RDS_INJ CASHFLOWM
Last SeqN in events TRAX: 264 Processed in TRAX . . : 264	DISPATCHER TRAX
Last RRN in Bonds Orders: 393 Processed by Printer : 393	Jobs with deal creation in Bonds orders (Example: NTINTCTRX, Jobs Java) BND_PRT
Covers: Last Sequence . . : 732 Processed in Diogene . . : 732	Jobs with deal creation in Bonds orders (Example NTIINTCTRX, GAFDIATSCO) COVINJ10
Deposit Covers LU: Last seq received . . . : 184994 Processed in Diogene . : 184994	CLURCV10 CLUINJ10
Deposit Covers NL: Last seq received . . . : 72776 Processed in Diogene . : 72776	CNLRCV10 CNLINJ10
Ulysse counters Last RRN in events . . . . : 21758 Processed in Host . . . . : 21742 Processed in E-GMK . . . . : 21722	All jobs with an insert in HSTEVENT (Example: INJULY, INJ INJULY_NR, Static DATA,DMARINJ Job Java NTINTCTRX) ULHTFTMQS E_GM
Last RRN in SCHEDULE Day . . : 18814 In Host with Retention . . : 18742 In Host without Retention: 18808	INJULY INJULY_NR H_SCHEDULE H_SCHED_NR
Last RRN in CAPSCHED Day . . : 499 In Host with Retention . . : 499 In Host without Retention: 499	INJULY INJULY_NR H_CAPSCHED H_CAPSC_NR
Last RRN in REPOSCHD Day . . : 339 In Host with Retention . . : 333 In Host without Retention: 339	INJULY INJULY_NR H_REPOSCHD H_REPSC_NR
Last RRN in HSTBONSD . . . : 45706 Processed in Host . . . . : 45691	Update Static Data Bond_Issues in Diogene H_BONDS
Titres : Last seq received : 430973 Processed in Diogene . . : 430973	TIURCV10 TIUINJ10
ZoneOrder: Last seq received : 4606 Processed in Diogene . . : 4606	ZOSRCV10 ZOSINJ10
Reco MEC : Last seq received : 101 Processed in Dio/Uly . . : 101	DMRRCV10 DMRINJ10

Credit-Router Last Sequence . . . . . : 1765022 Send to . . . . . : 1765022 Last RRN Received . . . . . : 1637345 Decoded . . . . . : 1637345 Max(Sequence) decoded . . . . . : 1765022	DISPATCHER CRR_SND CRR_RCV CRR_DEC CRR_DEC
SuperQueue Destination_Name S97M1503 Last Sequence ---Date-- - --Time-- Counter_NT Local . . . 0000592429 2006-12- 11 09.45.04 Sent . . . . 0000592429 2006-12- 11 09.45.04 0000592430	All jobs with generation entries in table NTSQLOGE NTSQ_SNDX
Gateway BONDS Sts Read by MQS . . 881 YES In Diogene. . . 881 YES Status reject YES	GAFRQBNVC1 GAFDIBNVC0
Gateway ATS Sts Read by MQS . . 88 YES In Diogene. . . 88 YES Status reject YES	GAFRQATSC1 GAFDIATSC0
Gateway SOP Sts Read by MQS . . 88 YES In Diogene. . . 88 YES Status reject YES	GAFRQSOPC1 GAFDISOPC0
Gateway RTS Sts Read by MQS . . 88 YES In Diogene. . . 88 YES Status reject YES	GAFRQRTSC1 GAFDIRTSC0
Gateway RMT Sts Read by MQS . . 80 YES In Diogene. . . 80 YES Status reject YES	GAFRQRMTC1 GAFDIRMTC0
Gateway DTS Sts Read by MQS . . 89 YES In Diogene. . . 89 YES Status reject YES	GAFRQD20C1 GAFDID20C0
Gateway BRC Sts Read by MQS . . 99 YES In Diogene. . . 99 YES Status reject YES	GAFRQSOPC1 (reception via Sophis-queue) GAFDIBRCC0
Gateway RBR Sts Read by MQS . . 160 YES In Diogene. . . 160 YES Status reject YES	GAFRQRBRC1 GAFDIRBRC0
Gateway GENPR Sts Read by MQS . . 300 YES In Diogene. . . 300 YES Status reject YES	GAFRQSOPC1 (reception via Sophis-queue) GAFDIGENC0
Gateway SUPER Sts Read by MQS . . 100 YES In Diogene. . . 100 YES Status reject YES	GAFRQSUPC1 GAFDISUPC0

Gateway	FXO Sts	
Read by MQS . .	0	YES
In Diogene. .	0	YES
Status reject	YES	
		GAFRQFXOC1 GAFDIFXOC0
Diogene status		RDS_INJ_O RDS_ONLINE RDS_XMIT
On line rate from Agora . . . . . :		
ACTIVE		
Ulysse status		RDS_INJ_O RDS_DAILY RDS_ONLINE
Rate from Agora . . . . . : TOSEND		
FORREC status		FORRECEBND FORRECEQU FORRECEREP FORRECETFT
Extract pre-settlement of the trades		
active YES		
Cellule Titres		
Received from Host - Inject to Dio:		TIURCV10- TIUINJ10
ACTIVE - ACTIVE		
Zone-Order status		
Received from Host - Inject to Dio:		ZOSRCV10 - ZOSINJ10
ACTIVE - ACTIVE		
Deposit Covers LU status		
Received from MQS - Inject to Dio:		CLURCV10 - CLUINJ10
ACTIVE - ACTIVE		
Deposit Covers NL status		
Received from MQS - Inject to Dio:		CNLRCV10 - CNLINJ10
ACTIVE - ACTIVE		

## 10.2 Tivoli Enterprise Console (TEC)

Information pending.